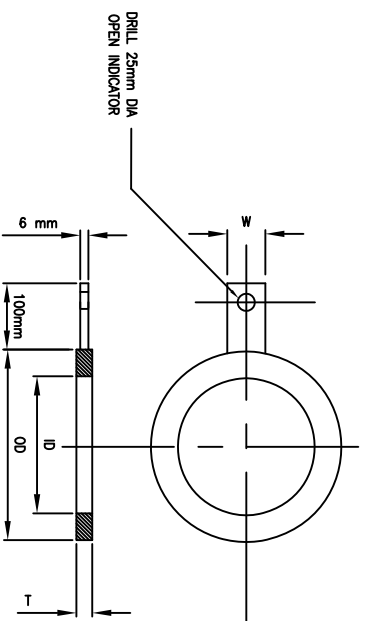
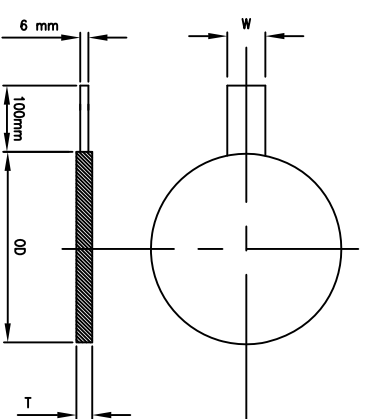


SPECTACLE BLIND



PADDLE SPACER



PADDLE BLIND

MTRL	NPS	2"		3"		4"		6"		8"		10"		12"		14"		16"		18"		20"		24"		WEIGHT = 100# OR MORE (NOTE 4)																			
		FLANGE RATING	OD	ID	A	W	T	OD	ID	A	W	T	OD	ID	A	W	T	OD	ID	A	W	T	OD	ID	A		W																		
CARBON & STAINLESS STEEL	150# RF/TF	6	102	80	121	51	6	133	89	152	64	10	171	114	190	64	13	219	168	241	76	13	276	219	298	76	16	337	273	362	102	19	406	324	432	102	19	448	356	476	108	NONE			
	300# RF	10	108	80	127	51	10	146	189	168	64	13	178	114	200	64	16	248	168	270	76	22	305	219	330	89	25	359	273	387	102										NONE				
	600# RF	10	108	55	127	57	13	146	83	168	67	16	191	108	216	76	22	264	162	292	86	28	318	212	349	95																NONE			
	900# RF	13	140	55	165	57	16	185	83	190	67	19	203	108	235	76	25	286	162	318	86	35	356	212	394	95																	NONE		
	1500# RF	13	140	53	165	70	19	171	78	203	76	22	206	102	241	89	35	279	154	318	89																							NONE	
	2500# RF	16	143	53	171	70	22	194	78	229	76	28	232	102	273	89	41	314	154	368	89																						NONE		
	300# RL	25	108	60	127	57	28	146	89	168	57	32	175	114	200	64	35	241	168	270	83	41	302	219	330	95																		NONE	
	600# RL	28	108	60	127	57	32	146	89	168	57	35	175	114	216	64	44	241	168	292	83	51	302	219	349	95																	NONE		
	900# RL	32	124	60	165	51	35	156	89	190	67	41	181	114	235	73	48	241	168	318	73																							NONE	
	1500# RL	35	124	60	165	54	44	168	89	203	73	48	194	114	241	76																												NONE	
2500# RL	41	133	60	171	57	51	188	89	229	76	64	203	114	273	83																													NONE	
CARBON & STAINLESS STEEL	150# RF/TF																																											8" & LARGER	
	300# RF																																											8" & LARGER	
	600# RF																																										8" & LARGER		
	900# RF																																											8" & LARGER	
	1500# RF																																											8" & LARGER	
	2500# RF																																											8" & LARGER	
	300# RL																																											8" & LARGER	
	600# RL																																											8" & LARGER	
	900# RL																																												8" & LARGER
	1500# RL																																												8" & LARGER
2500# RL																																												8" & LARGER	

USE SPECTACLE BLINDS

USE PADDLE & SPACER BLINDS

CALCULATE

CALCULATE

DRAWING NO.	REFERENCE DRAWINGS	REV.	ISSUED FOR CONSTRUCTION	DESCRIPTION	BY	DATE	CHK	APP.	CLIENT	CLIENT BY:	DATE
		0									

TITLE	SCALE	JOB NO.	DRAWING NO.	REV.
PIPING STANDARD DETAILS SPECTACLE/PADDLE BLIND SELECTION CHART	N.T.S.		PSD-0030	0

- NOTES
- JACK SCREWS SHALL BE PROVIDED IN ALL CASES WHERE THE BLIND THICKNESS 'T' IS 20 mm OR GREATER. 2 JACK SCREWS SHALL BE INSTALLED IN ONE OF THE MAINING FLANGES BY DRILLING & TAPPING 2 HOLES DIAMETRICALLY OPPOSITE EACH OTHER ON THE HORIZONTAL CENTER LINE MIDWAY BETWEEN THE REGULAR BOLT HOLES AND ON THE SAME B.C.D.
  - THE FOLLOWING U.N.C. JACK SCREW DIAMETERS SIZES SHALL BE USED  
2" NB - ALL RATINGS - 15 mm  
3"-6" NB - ALL RATINGS - 20 mm  
8" NB & ABOVE - ALL RATINGS - 25 mm
  - THIS STANDARD SHALL BE USED FOR SELECTION AND APPLICATION ONLY. FOR DETAILS SEE FABRICATION, INSTALLATION OR VENDOR DETAIL DRAWINGS.
  - BLINDS SHALL BE ACCESSIBLE FROM GRADE (UP TO 4500 mm WITH PORTABLE LADDER) OR PLATFORM. BLINDS IN A PIPE-STACK ARE CONSIDERED ACCESSIBLE, REGARDLESS OF PIPE-STACK HEIGHT.
  - WHEN BLIND WEIGHT EXCEEDS 100# LIFTING LUGS SHALL BE ADDED AND LIFTING AND HANDLING FACILITIES SHALL BE PROVIDED, EITHER BY MOBILE OR PERMANENT STRUCTURES.
  - WHERE FLANGES WITH BLINDS OCCUR IN ADJACENT LINES THEY MUST BE STAGGERED BY AT LEAST 300 mm.
  - THICKNESS 'T' FOR CARBON AND STAINLESS STEEL IS PER ANSI B31.3 AND API-599 AND IS SUITABLE FOR MAXIMUM FLANGE PRESSURE RATINGS PER ANSI B16.5. A 1.9% CORROSION ALLOWANCE FOR CARBON STEEL IS INCLUDED. NO CORROSION ALLOWANCE IS INCLUDED FOR STAINLESS STEEL.
  - SPECIAL CONDITIONS REQUIRING ALLOY MATERIAL ARE TO BE CALCULATED INDIVIDUALLY. THEY SHALL BE DESIGNED TO COMPLY WITH ANSI B31.3 AND B16.5