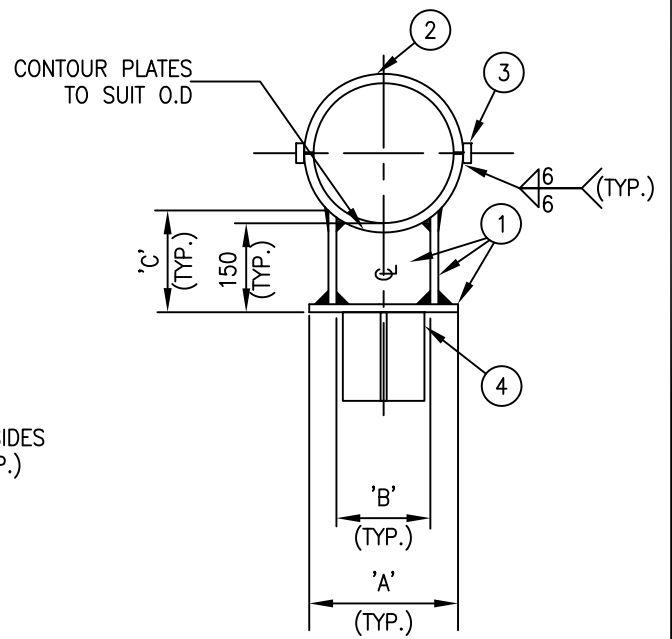
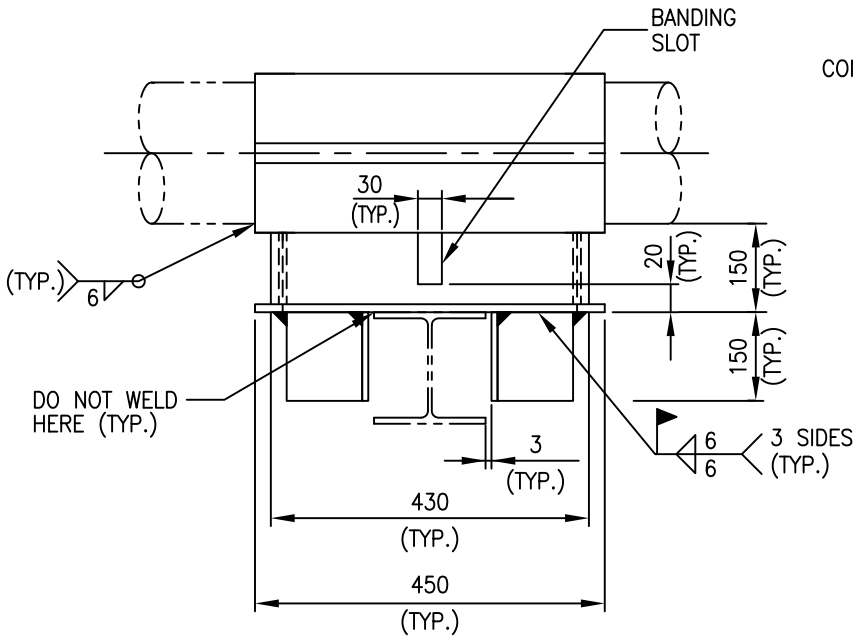
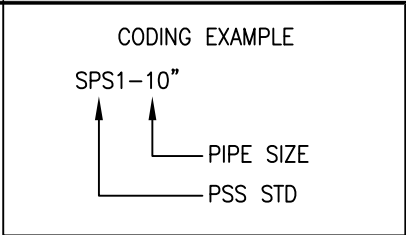


PIPE SIZE	'A'	'B'	'C'
8"	210	150	174
10"	245	180	178
12"	315	250	204



MK.	QTY	DESCRIPTION	MATERIAL
1	5	12.7 PLATE AS SHOWN	CSA G40.21 GR. 300W
2	2	PLATE 12.7 x 180" WRAP, 450 LG., ID to match pipe	ASTM A516 GR. 70
3	2	BAR 12.7 x 25 x 450 LG	CSA G40.21 GR. 300W
4	4	TEE WT 100 x 13.5 x 150 LG	CSA G40.21 GR. 300W

0	ISSUED FOR CONSTRUCTION						
REV	REVISION	DATE	DRN	CHK	ENG	APP	

CLIENT	TITLE SPECIAL SUPPORT STANDARD DIRECTIONAL ANCHOR FOR CSA PIPING 8" TO 12" SPS1					
PREPARED BY	SCALE N.T.S.	DWG. No. SPS-0001	CLIENT DWG. No.	PROJ.	REV. 0	