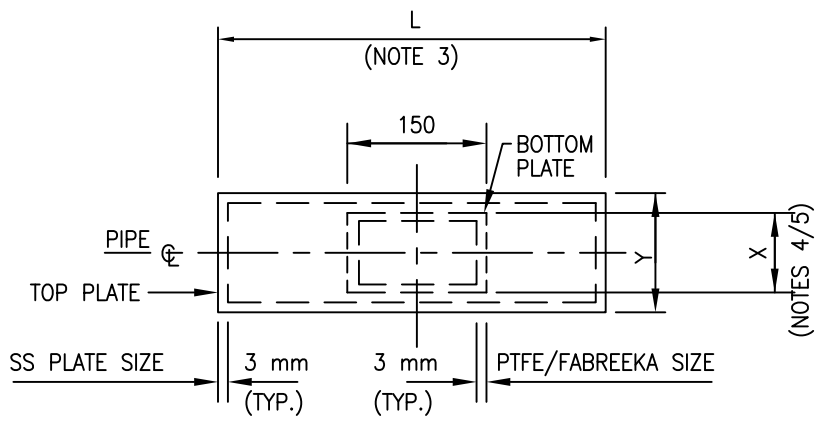
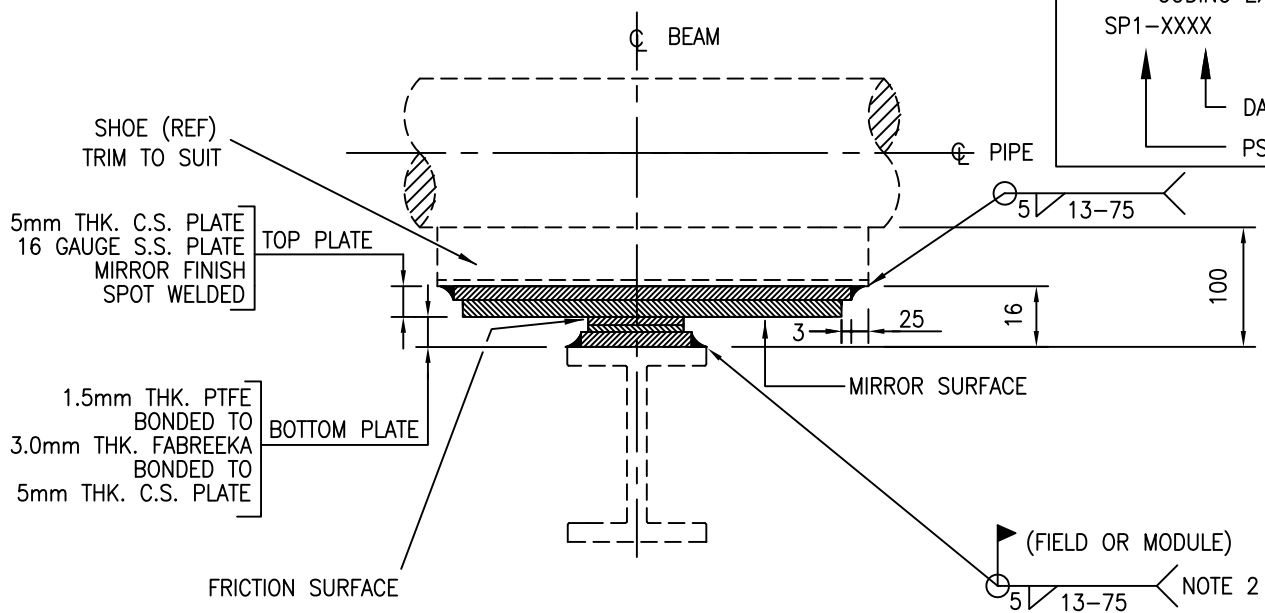


CODING EXAMPLE
 SP1-XXXX
 DATA SHT. NO.
 PSS STD



REF. DWG. _____
 LINE No. _____

L	
X	
Y	

NOTES:

1. PIPING FABRICATOR TO PROTECT SS MIRROR FINISH FROM DAMAGE AND TEMPORARILY ATTACH THE MATING BOTTOM PLATE TO THE SHOE FOR SHIPPING.
2. AVOID WELD SPLATTER. WIPE CONTACT SURFACES CLEAN AND REMOVE SHIPPING PROTECTION BEFORE INSTALLATION.
3. THE LENGTH 'L' OF THE TOP PLATE IS THE LENGTH OF THE SHOE LESS 25mm.
4. THE WIDTH 'Y' OF THE TOP PLATE IS THE WIDTH OF SHOE PLUS THE LATERAL EXPANSION. THE BOTTOM PLATE IS CENTERED ON Q OF THE PIPE
5. THE WIDTH 'X' OF THE BOTTOM PLATE IS THE WIDTH OF THE SHOE. THE BOTTOM PLATE IS OFFSET FROM PIPE Q BY THE AMOUNT INDICATED ON THE G.A. OR ISOMETRIC.

0	ISSUED FOR CONSTRUCTION						
REV	REVISION	DATE	DRN	CHK	ENG	APP	
CLIENT	TITLE DATA SHEET TEFLON SLIDE PLATE ASSEMBLY FOR SHOES SP1						
PREPARED BY	SCALE N.T.S.	DWG. No. SP01-XXXX	CLIENT DWG. No.	PROJ.	REV. 0		