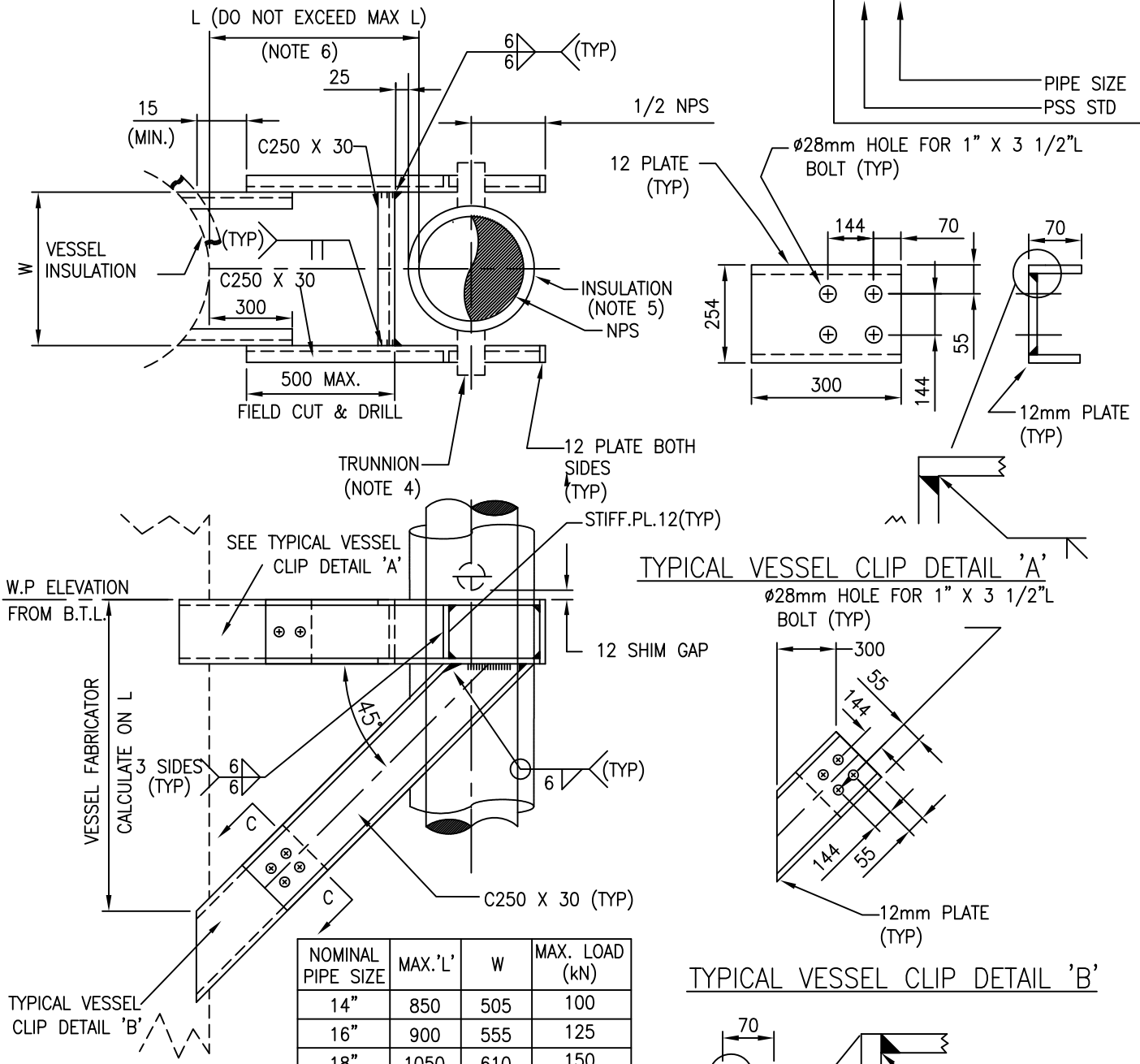


CODING EXAMPLE  
VS4-14"  
PIPE SIZE  
PSS STD



**NOTES:**

1. VESSEL FABRICATOR TO FURNISH VESSEL CLIP WELDED TO VESSEL. RE-PAD ALL OTHER MATERIAL FURNISHED BY SUPPORT FABRICATOR.
2. ALL CLIPS WELDED TO VESSEL TO BE SAME MATERIAL AS STEEL ALL OTHER MATERIAL TO BE CARBON STEEL CSA G49.21-04 GR.300W
3. BOLTS A193-B7 C/W A194-2H NUTS
4. TRUNNION PIPE SUPPORTS SEE DWG PSS-DS03.
5. DIMENSIONS ARE FOR 50mm INSULATION. GREATER INS. THICKNESS MUST BE LOCALLY COPED AT SUPPORT.
6. INDICATE LENGTH ON ISOMETRIC (COMMENT).

0	ISSUED FOR CONSTRUCTION						
REV	REVISION	DATE	DRN	CHK	ENG	APP	
CLIENT	TITLE PIPE SUPPORT STANDARDS 14" TO 24" VESSEL SUPPORT FOR BARE AND INSULATED PIPE VS4						
PREPARED BY	SCALE N.T.S.	DWG. No. PSS-VS04	PROJ.	REV. 0			