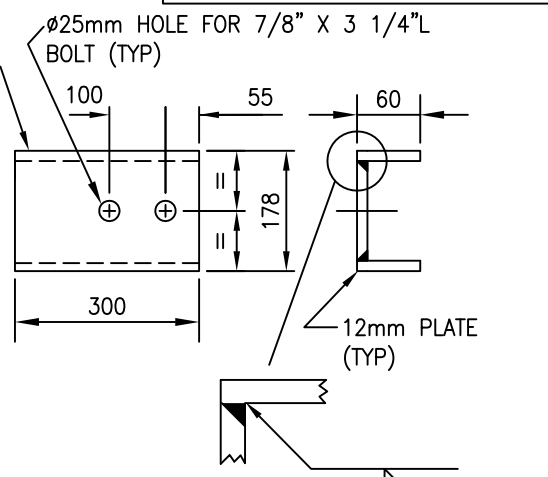
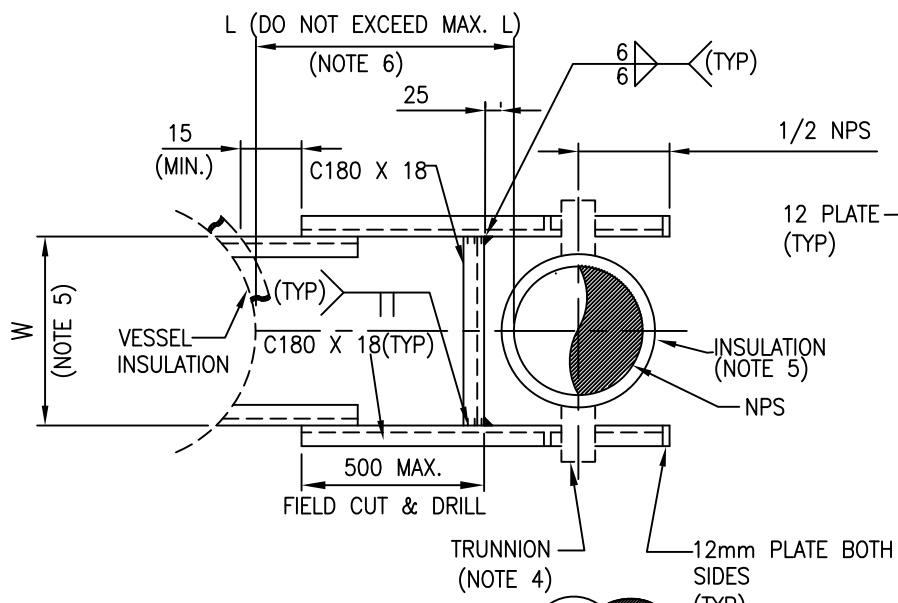
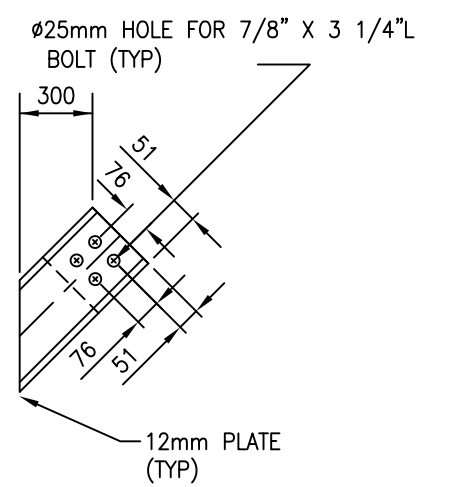
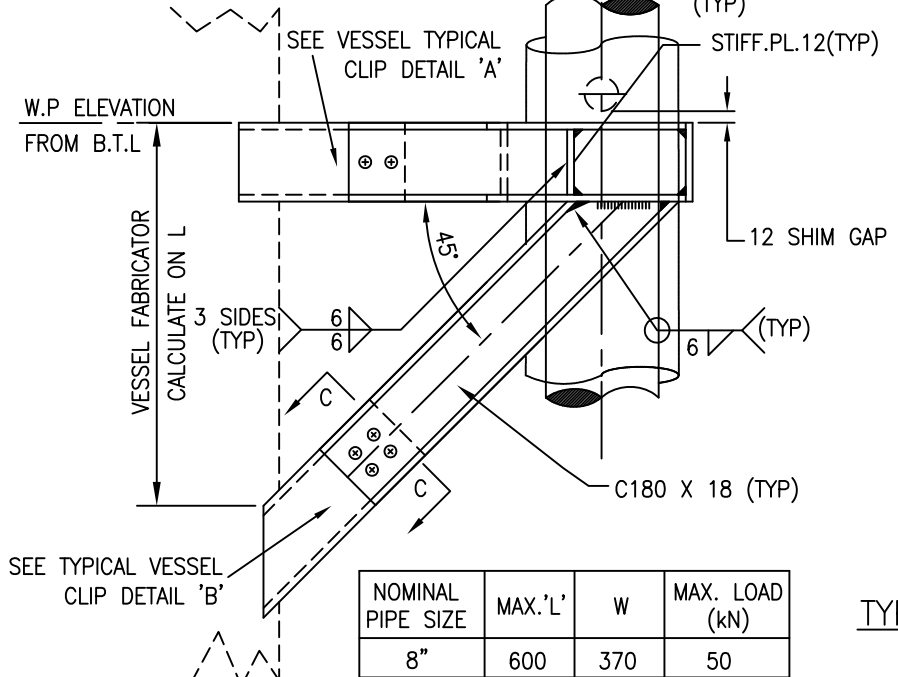


CODING EXAMPLE
VS3-12"
PIPE SIZE
PSS STD.



TYPICAL VESSEL CLIP DETAIL 'A'

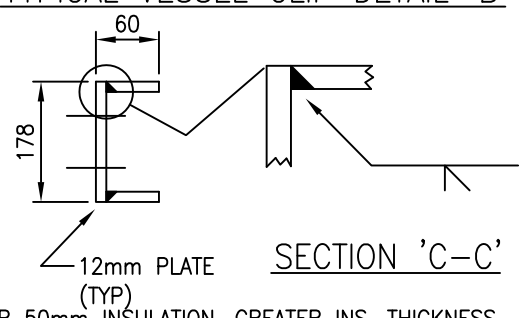


TYPICAL VESSEL CLIP DETAIL 'B'

NOMINAL PIPE SIZE	MAX.'L'	W	MAX. LOAD (kN)
8"	600	370	50
10"	675	425	75
12"	800	475	100

NOTES:

1. VESSEL FABRICATOR TO FURNISH VESSEL CLIP WELDED TO VESSEL. RE-PAD ALL OTHER MATERIAL FURNISHED BY SUPPORT FABRICATOR.
2. ALL CLIPS WELDED TO VESSEL TO BE SAME MATERIAL AS STEEL ALL OTHER MATERIAL TO BE CARBON STEEL CSA G49.21-04 GR.300W
3. BOLTS A193-B7 C/W A194-2H NUTS.
4. TRUNNION PIPE SUPPORTS SEE DWG PSS-DS03.
5. DIMENSIONS ARE FOR 50mm INSULATION. GREATER INS. THICKNESS MUST BE LOCALLY COPED AT SUPPORT.
6. INDICATE LENGTH ON ISOMETRIC (COMMENT).



SECTION 'C-C'

0	ISSUED FOR CONSTRUCTION							
REV	REVISION	DATE	DRN	CHK	ENG	APP		

CLIENT	TITLE PIPE SUPPORT STANDARDS 8" TO 12" VESSEL SUPPORT FOR INSULATED PIPE VS3						
PREPARED BY	SCALE N.T.S.	DWG. No. PSS-VS03	CLIENT DWG. No.	PROJ.	REV. 0		