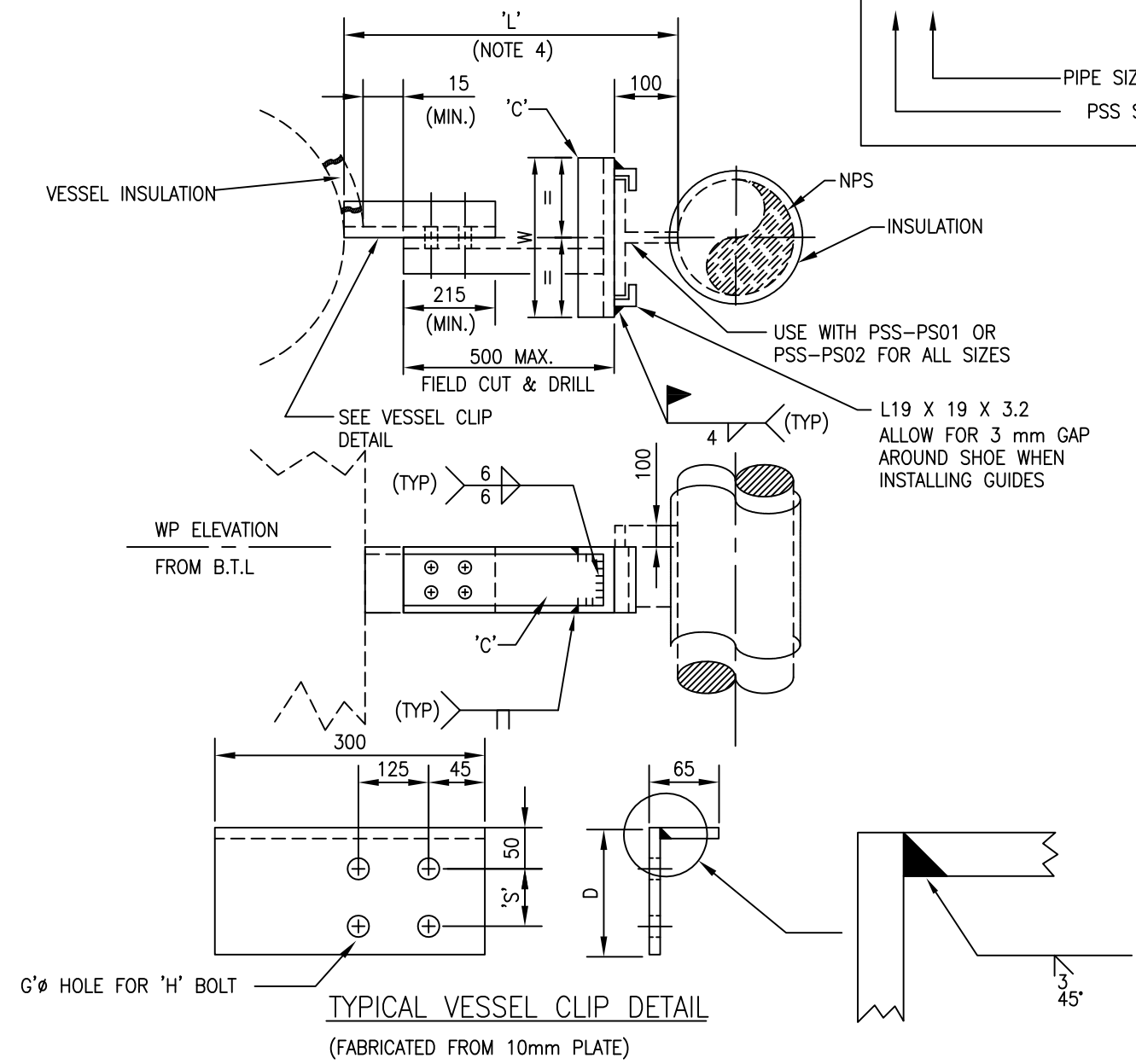


CODING EXAMPLE  
 VG5-4"  
 PIPE SIZE  
 PSS STD



TYPICAL VESSEL CLIP DETAIL  
 (FABRICATED FROM 10mm PLATE)

NOTES:

1. VESSEL FABRICATOR TO FURNISH VESSEL CLIP WELDED TO VESSEL RE-PAD. ALL OTHER MATERIAL FURNISHED BY SUPPORT FABRICATOR.
2. ALL CLIPS WELDED TO VESSEL TO BE SAME MATERIAL AS VESSEL. ALL OTHER MATERIAL TO BE CARBON STEEL CSA G40.21 GR.300W OR 350W.
3. BOLTS A325 C/W A563 NUT AND WASHER.
4. INDICATE LENGTH ON ISOMETRIC (COMMENT).

NOMINAL PIPE SIZE	C	D	W	S	G	H
2"	C200 X 21	203	185	103	Ø22	3/4" X 2 1/4" L
3"			185			
4"			185			
6"			200			
8"			200			
10"	C230 X 22	229	230	129	Ø22	3/4" X 3 1/4" L
12"			230			

0	ISSUED FOR CONSTRUCTION									
REV	REVISION					DATE	DRN	CHK	ENG	APP
CLIENT		TITLE PIPE SUPPORT STANDARD 2" TO 12" VESSEL GUIDE FOR INSULATED PIPE VG5								
PREPARED BY		SCALE N.T.S.	DWG. No. PSS-VG05			PROJ.			REV. 0	