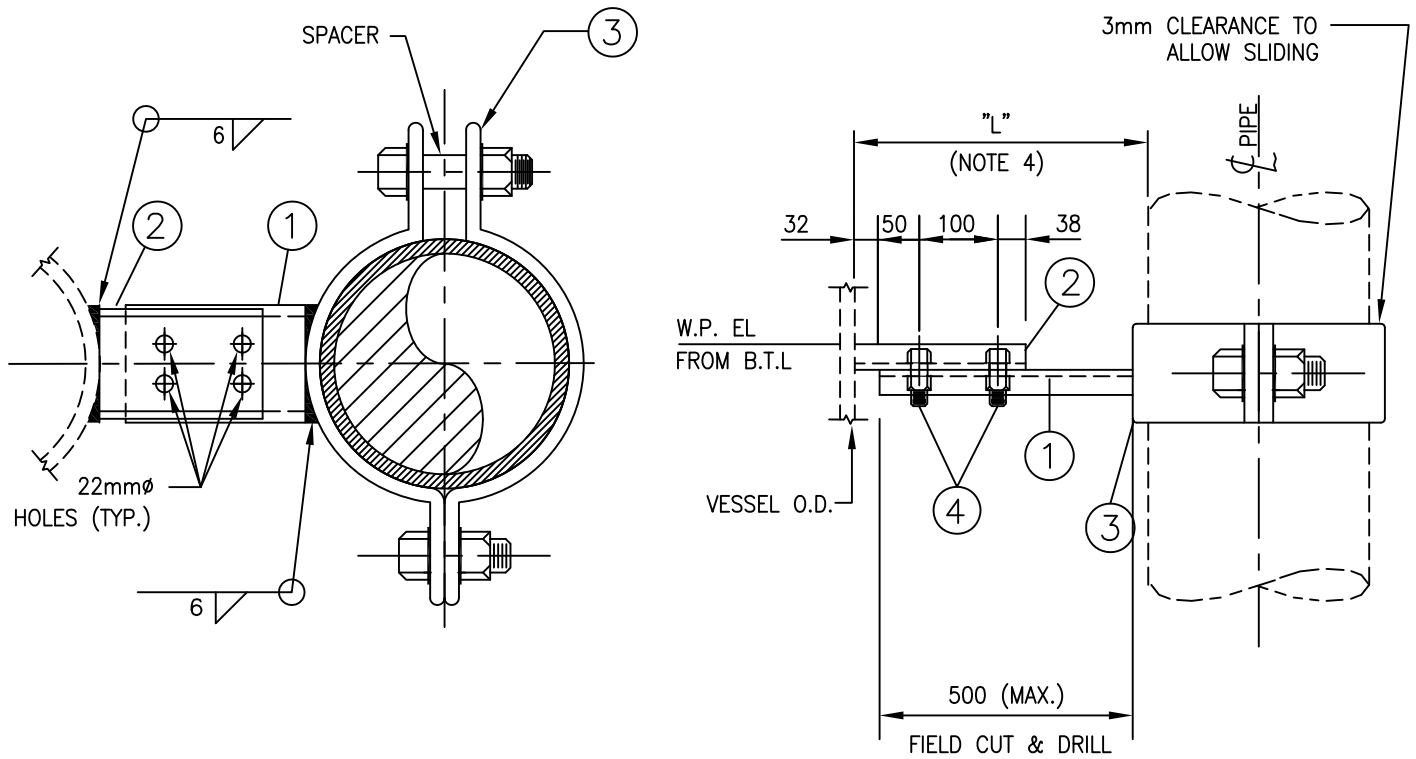
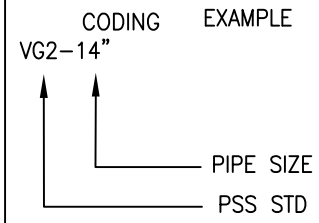


ITEM No.	QTY	DESCRIPTION
1	1	C200x17
2	1	C200x17 VESSEL CLIP
3	1	ANVIL PIPE CLAMP FIG. 216 OR EQUAL C/W 2 NUTS AND SPACER
4	4	3/4" x 2 3/4" LG BOLTS C/W 2 NUTS



NOTES:

1. VESSEL FABRICATOR TO FURNISH VESSEL CLIP WELDED TO VESSEL. RE-PAD ALL OTHER MATERIAL FURNISHED BY SUPPORT FABRICATOR
2. ALL CLIPS WELD TO VESSEL TO BE SAME MATERIAL AS VESSEL. ALL OTHER MATERIAL TO BE CARBON STEEL CSA G40.21 GR.300W.
3. BOLTS A325 c/w A563 NUT AND WASHER.
4. INDICATE LENGTH ON ISOMETRIC (COMMENT).

0	RE-ISSUED FOR CONSTRUCTION						
REV	REVISION	DATE	DRN	CHK	ENG	APP	
CLIENT	TITLE PIPE SUPPORT STANDARD 12" TO 24" VESSEL GUIDE FOR UNINSULATED PIPE VG2						
PREPARED BY	SCALE N.T.S.	DWG. No. PSS-VG02	CLIENT DWG. No.	PROJ.	REV. 0		