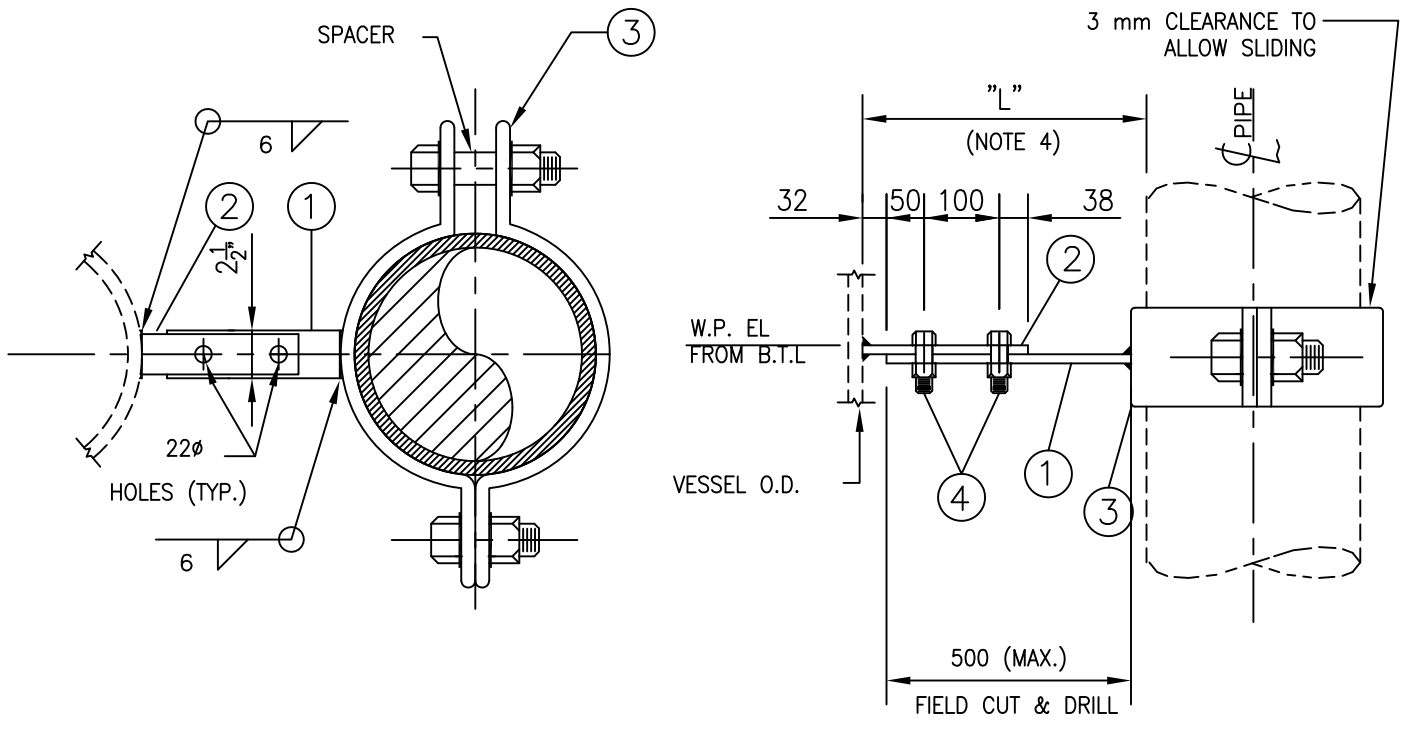


ITEM No.	QTY	DESCRIPTION
1	1	(12 x 65) FLAT BAR
2	1	(12 x 65) FLAT BAR VESSEL CLIP
3	1	ANVIL PIPE CLAMP FIG. 212 OR EQUAL C/W 2 NUTS AND SPACER
4	2	3/4" x 2 3/4" LG BOLTS C/W 2 NUTS



NOTES:

1. VESSEL FABRICATOR TO FURNISH VESSEL CLIP WELDED TO VESSEL. RE-PAD ALL OTHER MATERIAL FURNISHED BY SUPPORT FABRICATOR.
2. ALL CLIPS WELD TO VESSEL TO BE SAME MATERIAL AS VESSEL. RE-PAD ALL OTHER MATERIAL TO BE CARBON STEEL CSA G40.21 GR.300W.
3. BOLTS A325 c/w A563 NUT AND WASHER.
4. INDICATE LENGTH ON ISOMETRIC (COMMENT).

0	ISSUED FOR CONSTRUCTION									
REV	REVISION				DATE	DRN	CHK	ENG	APP	
CLIENT		TITLE PIPE SUPPORT STANDARD NPS 3/4" TO 10" VESSEL GUIDE FOR UNINSULATED PIPE VG1								
PREPARED BY		SCALE	DWG. No. PSS-VG01			PROJ.			REV.	
		N.T.S.	CLIENT DWG. No.						0	