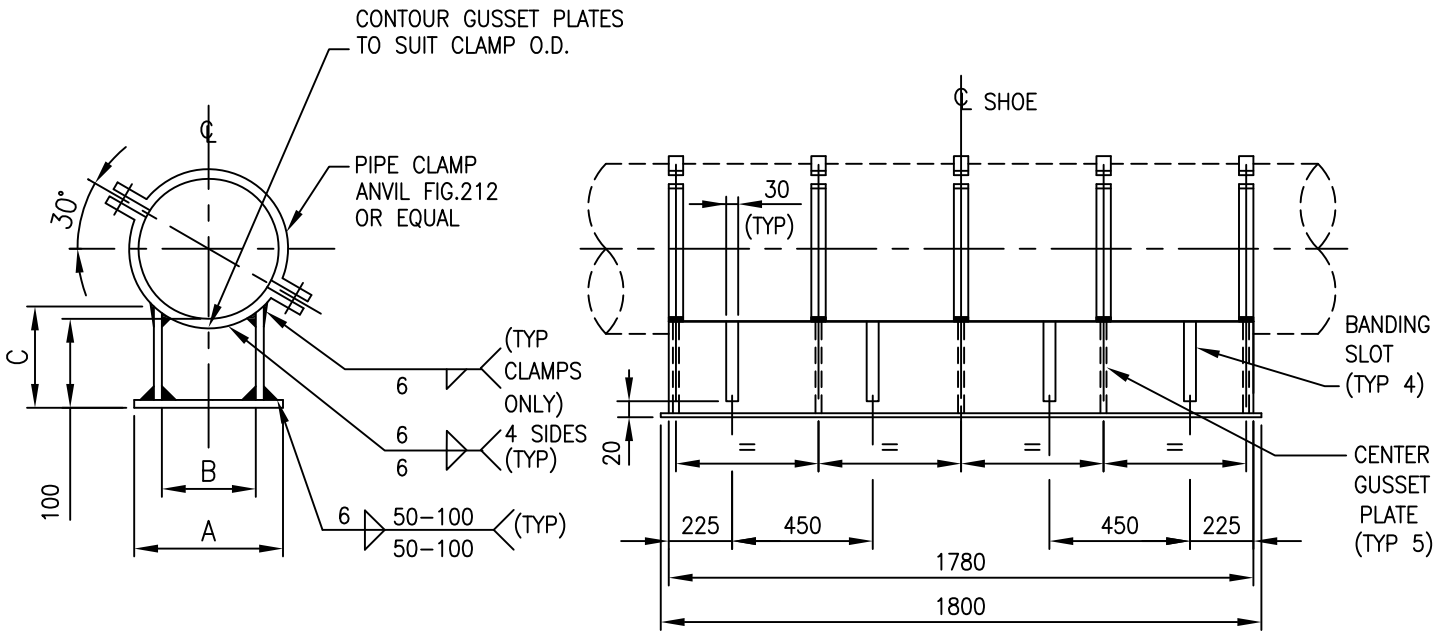


CODING EXAMPLE  
 PS33-16"  
 PIPE SIZE  
 PSS STD



PIPE SIZE	'A'	'B'	'C'
12"	220	160	112
14"	275	215	127
16"	300	240	131
18"	330	270	132
20"	380	320	144
22"	430	370	157
24"	480	420	171

**NOTES**

- ALL MATERIAL IS CARBON STEEL CSA G40.21-04 GR.300W - 10mm TK.
- FOR ALL NON CS PIPING (ALLOY, FRP, PLASTIC) A 3mm THK THERMOFAB LINER OR EQUAL MUST BE WRAPPED AROUND THE PIPE AT THE CLAMP CONTACT POINTS.

0	ISSUED FOR CONSTRUCTION						
REV	REVISION	DATE	DRN	CHK	ENG	APP	
CLIENT	TITLE PIPE SUPPORT STANDARD CLAMPED EXTRA LONG PIPE SHOE 100mm HIGH NPS 12" TO NPS 24" PS33						
PREPARED BY	SCALE N.T.S.	DWG. No. PSS-PS33	PROJ.	REV. 0			