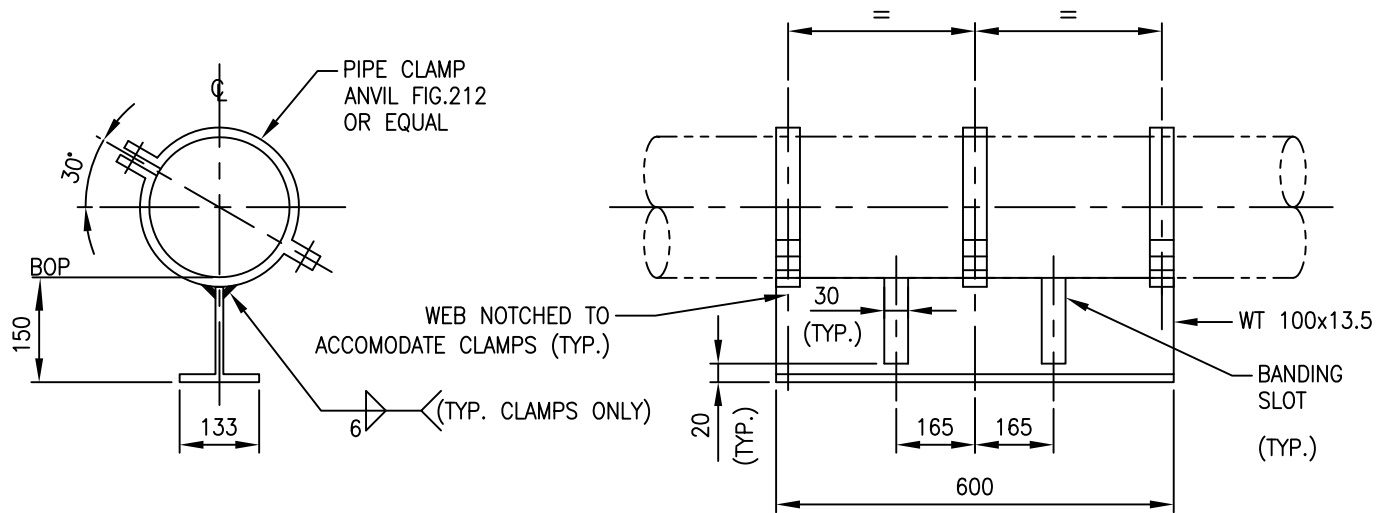
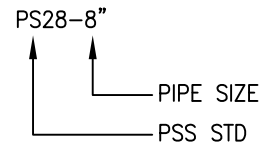


CODING EXAMPLE



NOTES

1. CLAMP SHOE MATERIAL IS CARBON STEEL CSA G40.21 GR.300W.
2. BOLTING MATERIAL A325, A563 NUT AND WASHER.
3. FOR ALL NON CS PIPING (ALLOY, FRP, PLASTIC) A 3mm THK THERMOFAB LINER OR EQUAL MUST BE WRAPPED AROUND THE PIPE AT THE CLAMP CONTACT POINTS.

| | | | | | | |
|-------------|---|----------------------|--------------------|-------|-----------|-----|
| | | | | | | |
| 0 | ISSUED FOR CONSTRUCTION | | | | | |
| REV | REVISION | DATE | DRN | CHK | ENG | APP |
| CLIENT | TITLE PIPE SUPPORT STANDARD CLAMPED LONG PIPE SHOE 150 mm HIGH NPS 8" AND BELOW PS28 | | | | | |
| PREPARED BY | SCALE N.T.S. | DWG. No. PSS-PS28 | CLIENT DWG. No. | PROJ. | REV. 0 | |