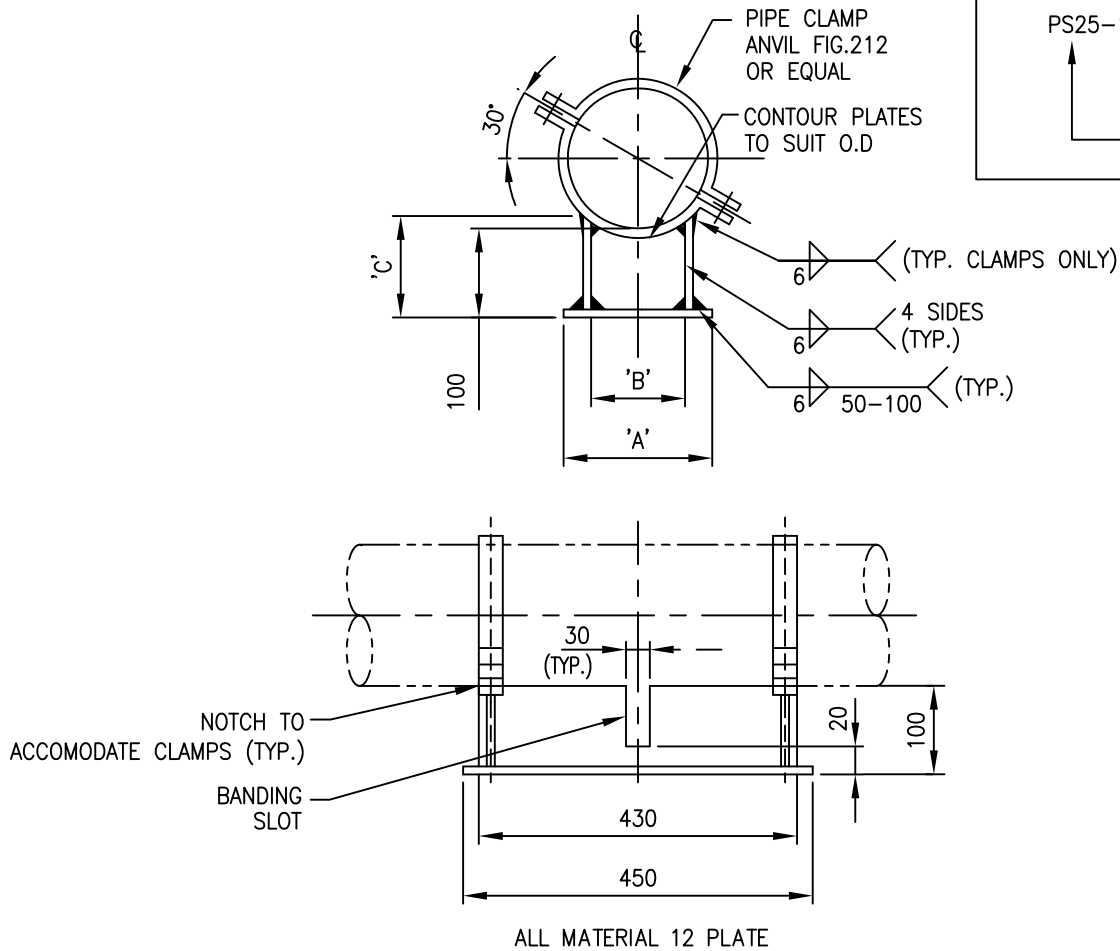


CODING EXAMPLE
 PS25-16"
 PIPE SIZE
 PSS STD



PIPE SIZE	'A'	'B'	'C'
14"	275	215	138
16"	300	240	141
18"	330	270	144
20"	380	320	157
22"	430	370	171
24"	480	420	185
30"	630	570	228
36"	780	720	275

NOTES

1. CLAMP SHOE MATERIAL IS CARBON STEEL CSA G40.21 GR.300W.
2. BOLTING MATERIAL A325, A194-2H OR A563 NUT.
3. FOR ALL NON CS PIPING (ALLOY, FRP, PLASTIC) A 3mm THK THERMOFAB LINER OR EQUAL MUST BE WRAPPED AROUND THE PIPE AT THE CLAMP CONTACT POINTS.

0	ISSUED FOR CONSTRUCTION						
REV	REVISION	DATE	DRN	CHK	ENG	APP	
CLIENT		TITLE PIPE SUPPORT STANDARD CLAMPED PIPE SHOE 100 mm HIGH NPS 14" TO NPS 36" PS25					
PREPARED BY		SCALE N.T.S.	DWG. No. PSS-PS25	PROJ.	REV. 0		