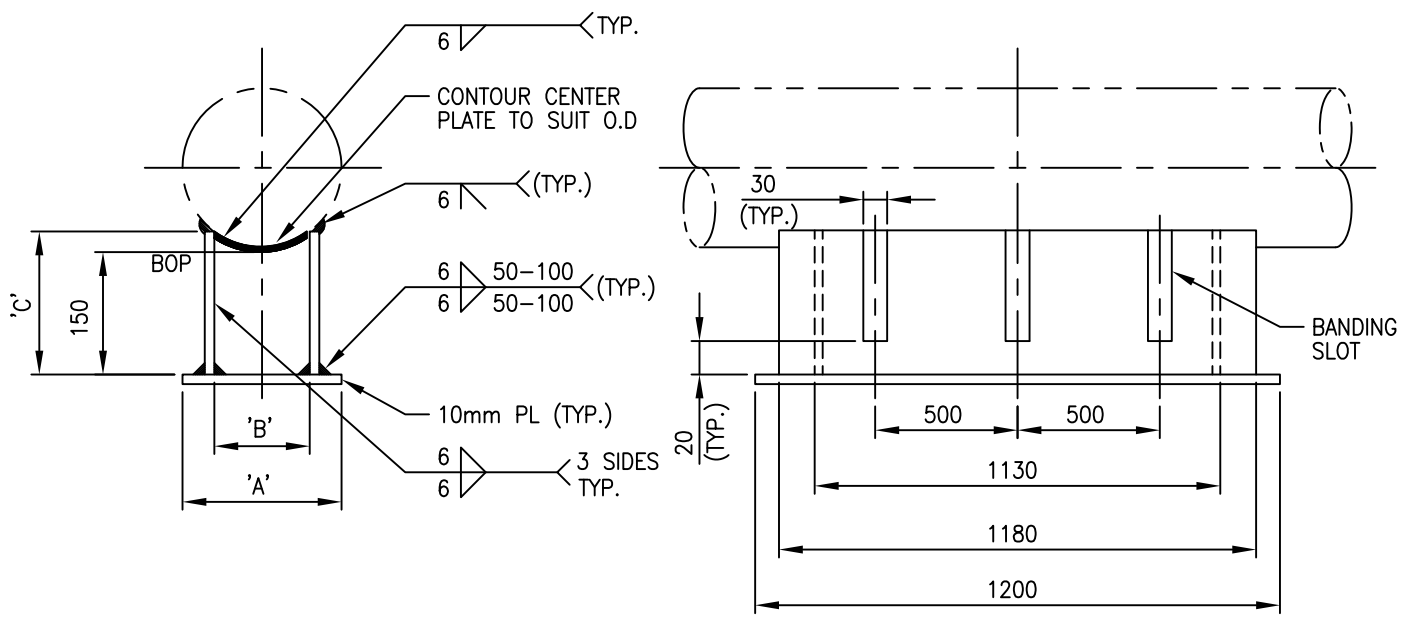


CODING EXAMPLE
 PS16-18"
 PIPE SIZE
 PSS STD



PIPE SIZE	'A'	'B'	'C'
14"	275	215	186
16"	300	240	189
18"	330	270	194
20"	380	320	207
24"	480	420	234
30"	630	570	278
36"	780	720	325

NOTES

1. ALL MATERIAL IS CARBON STEEL CSA G40.21 GR.300W.
2. PIPE ENGINEER SHALL DETERMINE IF REPAD IS TO BE USED DEPENDING ON SERVICE.
3. WHERE A SHOE IS USED IN COMBINATION WITH A REINFORCING PAD, THE TOTAL SHOE HEIGHT MUST BE MAINTAINED BY TRIMMING THE SHOE BY THE AMOUNT OF THE REPAD THICKNESS.

0	ISSUED FOR CONSTRUCTION						
REV	REVISION	DATE	DRN	CHK	ENG	APP	
CLIENT	TITLE PIPE SUPPORT STANDARD EXTRA LONG PIPE SHOES 150mm HIGH NPS 14" TO NPS 36" PS16						
PREPARED BY	SCALE N.T.S.	DWG. No. PSS-PS16	PROJ.	REV. 0			