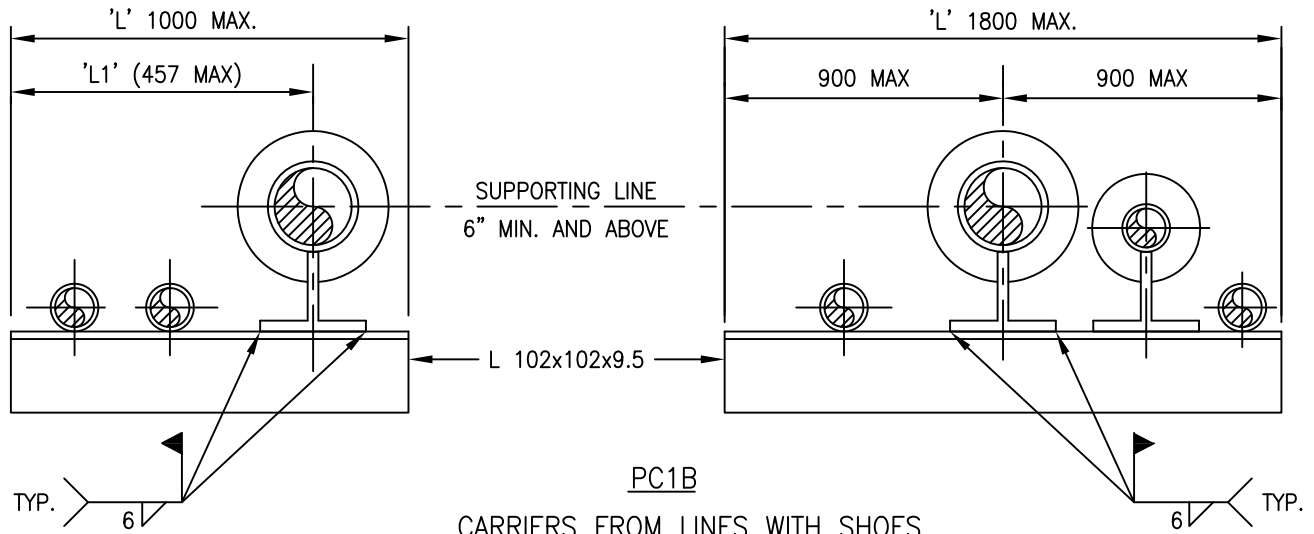


PC1A

CARRIERS FROM LINES WITHOUT SHOES

(ONLY FOR CS LINES, USE IN CONJUNCTION WITH G1 AND/OR G2)



PC1B

CARRIERS FROM LINES WITH SHOES

(USE IN CONJUNCTION WITH STANDARD SHOE)

NOTES:

1. CODING MUST ONLY BE SHOWN ON THE ISOMETRIC OF THE SUPPORTING LINE.
2. ALL ANGLE STEEL TO BE CSA G40.21 GR.300W.
3. NO ANCHORS ALLOWED ON SUPPORTED LINES.
4. GUIDE G1 OR G2 SEE DWG. PSS-G001. MUST BE LISTED SEPARATELY.
5. STRESS APPROVAL MUST BE OBTAINED FOR USE OF THESE CARRIERS.

| | | | | | | | | |
|-------------|---------------------------------------------------------------|----------------------|--------------------|-------|-----------|-----|--|--|
| 0 | ISSUED FOR CONSTRUCTION | | | | | | | |
| REV | REVISION | DATE | DRN | CHK | ENG | APP | | |
| CLIENT | TITLE PIPE SUPPORT STANDARD PIPE CARRIER PC1A / PC1B | | | | | | | |
| PREPARED BY | SCALE N.T.S. | DWG. No. PSS-PC01 | CLIENT DWG. No. | PROJ. | REV. 0 | | | |