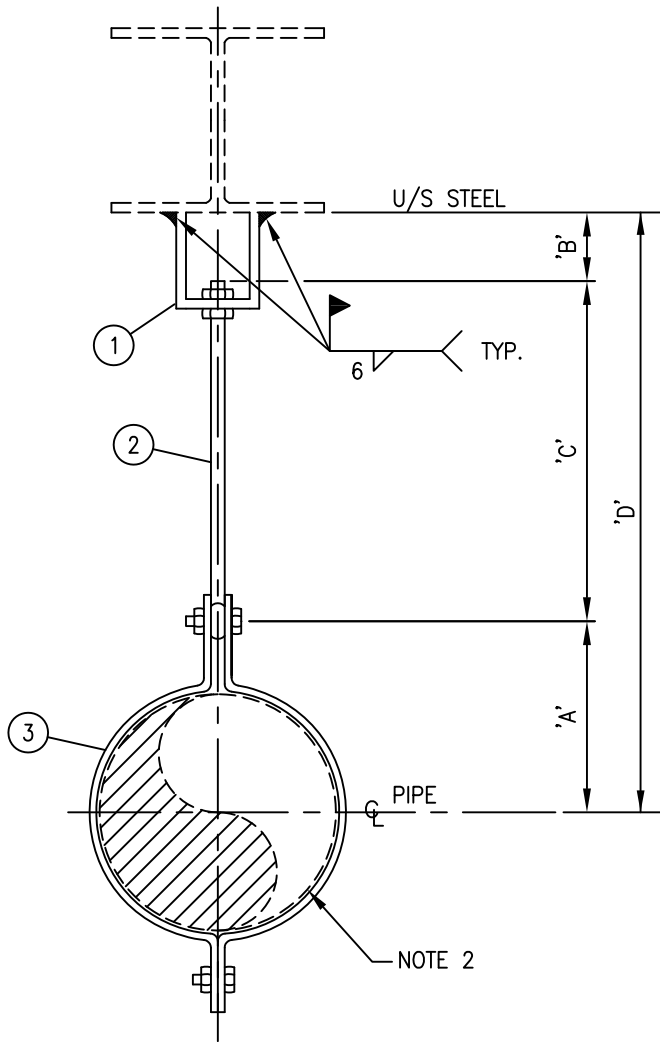


CODING EXAMPLE
 HR1-4"- 500

↑ PIPE SIZE
 ↑ LENGTH 'D'
 ↑ PSS STD



PIPE SIZE	ROD SIZE	MAX. DES. LOAD Kg	'A'	'B'
1"	3/8"	230	32	50
1 1/2"	3/8"	365	41	50
2"	3/8"	470	54	50
3"	1/2"	470	75	50
4"	5/8"	470	92	50
6"	3/4"	735	127	50
8"	7/8"	735	155	75
10"	7/8"	1130	189	75
12"	7/8"	1130	214	75
14"	1"	1130	235	75
16"	1"	1130	260	75
18"	1 1/4"	1390	295	75
20"	1 1/4"	1390	324	75
24"	1 1/4"	1390	387	75

ROD LENGTH 'C' = 'D' - ('A' + 'B')

BILL OF MATERIALS

MARK No.	DESCRIPTION	No REQ'D PER UNIT
1	WELDED BEAM ATTACHMENT, IIT GRINNELL FIG. 66 OR EQUAL.	1
2	WELDED EYE ROD C/W TWO HEX HEAD NUTS, IIT GRINNELL FIG. 278 OR EQUAL.	1
3	PIPE CLAMP, IIT GRINNELL 212 OR EQUAL.	1

NOTES:

1. MAXIMUM ALLOWABLE TEMPERATURE 340°C
2. WHERE PIPE MATERIAL IS OTHER THAN CARBON STEEL, PIPE IS TO BE WRAPPED WITH PROTECTIVE TAPE BEFORE INSTALLATION OF PIPE CLAMP.

0	ISSUED FOR CONSTRUCTION						
REV	REVISION	DATE	DRN	CHK	ENG	APP	

CLIENT	TITLE PIPE SUPPORT STANDARD NPS 1" TO NPS 24" HANGER ROD FOR UNINSULATED LINES HR1					
PREPARED BY	SCALE N.T.S.	DWG. No. PSS-HR01	CLIENT DWG. No.	PROJ.	REV. 0	