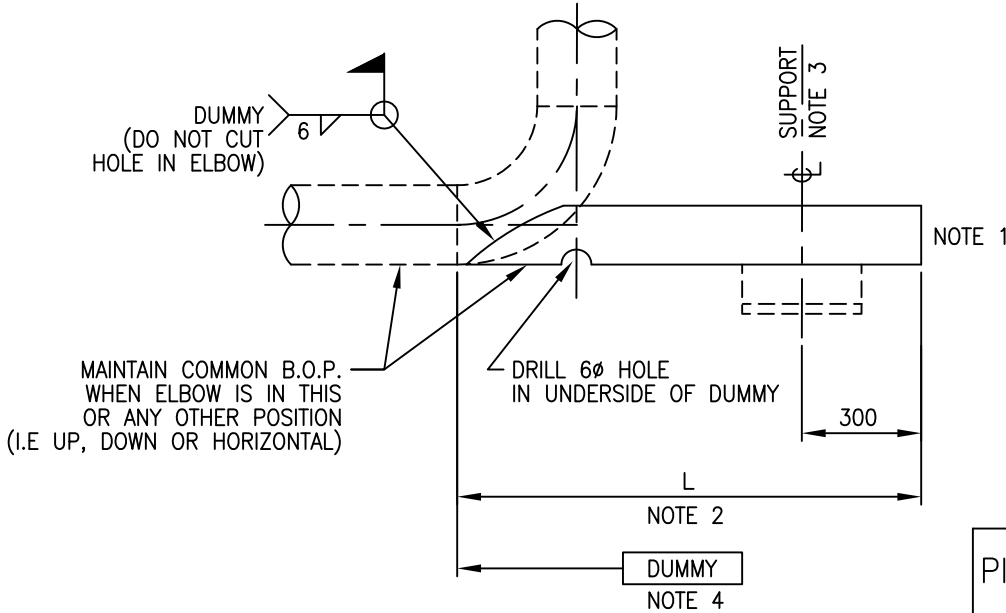
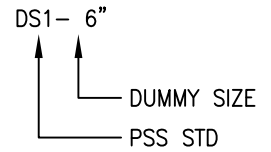


CODING EXAMPLE



PIPE SIZE	DUMMY SIZE NOTES 4,5&6
2"	1 1/2"
3"	2"
4"	3"
6"	4"
8"	6"
10"	8"
12"	8"
14"	12"
16"	12"
18"	14"
20"	14"
22"	16"
24"	16"

NOTES:

1. DUMMY SUPPORT MATERIAL TYPE TO MATCH PIPING
2. LENGTH 'L' ON THE ISOMETRIC INDICATES THE LENGTH OF THE DUMMY. THE TOTAL LENGTH OF DUMMY MATERIAL WILL BE SHOWN IN THE B.O.M.
3. SHOE REQUIREMENT TO BE INDICATED ON THE ISOMETRIC IF REQUIRED.
4. SPEC BREAK ON THE ISOMETRIC INDICATES THE SCHEDULE CHANGE FOR THE DUMMY MATERIAL ONLY.
5. UNLESS NOTED OTHERWISE ON APPROVED STRESS SKETCH USE LINE SPEC MATERIAL & WALL THICKNESS FOR THE DUMMY
6. WHERE SPECIFIED ON THE APPROVED STRESS SKETCH THE DUMMIES WILL USE THE WALL THICKNESS SPECIFIED THE SPECIFIED W.T. DUMMY MATERIAL WILL BE SELECTED FROM 'DUMMY SPEC' TO MATCH THE LINE SPEC MATERIAL TYPE

0	ISSUED FOR CONSTRUCTION						
REV	REVISION	DATE	DRN	CHK	ENG	APP	
CLIENT	TITLE PIPE SUPPORT STANDARD NPS 2" TO NPS 24" DUMMY PIPE SUPPORT DS1						
PREPARED BY	SCALE N.T.S.	DWG. No. PSS-DS01	PROJ.	REV. 0			
		CLIENT DWG. No.					