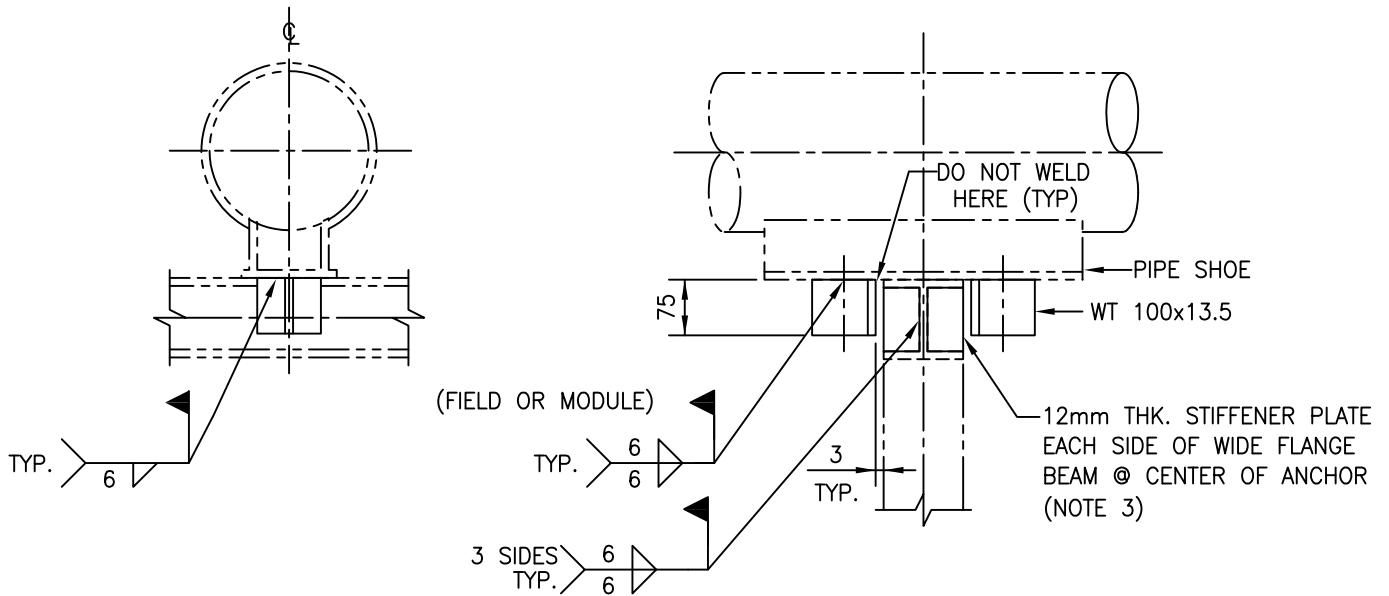


CODING EXAMPLE
 DA4-12"
 ↑ PIPE SIZE
 ↑ PSS STD



NOTES:

1. FOR PIPE SHOE DETAILS SEE PSS-PS05, PSS-PS06, PSS-PS07, PSS-PS08, PSS-PS09, PSS-PS10, PSS-PS11, PSS-PS12, PSS-PS13, PSS-PS14, PSS-PS20, PSS-PS21, PSS-PS22, PSS-PS23, PSS-PS24, PSS-PS26, PSS-PS28, PSS-PS29, PSS-PS30, PSS-PS31, PSS-PS32, PSS-PS33, PSS-PS34, PSS-PS35, PSS-PS36, PSS-PS37.
2. ANCHOR CLIPS TO BE CARBON STEEL CSA G40.21 GR.300W OR 350W.
3. STIFFENER PLATES ON FIRE PROOFED WIDE FLANGE BEAMS MUST PROJECT 10 mm OUTSIDE OF FIREPROOFING.
4. CONCRETE BEAMS MUST HAVE WEAR PLATES.

0	ISSUED FOR CONSTRUCTION						
REV	REVISION	DATE	DRN	CHK	ENG	APP	
CLIENT	TITLE PIPE SUPPORT STANDARD NPS 2" TO NPS 12" DIRECTIONAL ANCHOR INSULATED LINES DA4						
PREPARED BY	SCALE N.T.S.	DWG. No. PSS-DA04	CLIENT DWG. No.	PROJ.	REV. 0		