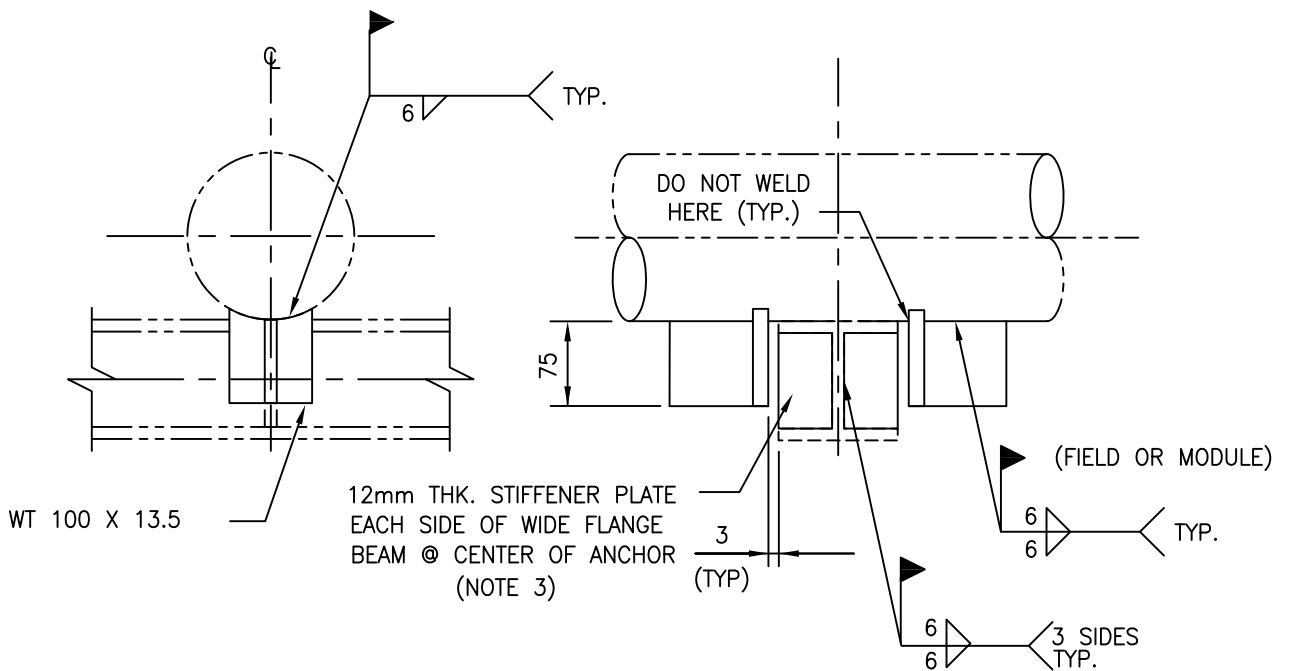


CODING EXAMPLE
 DA2-10"
 PIPE SIZE
 PSS STD



NOTES:

1. DO NOT USE FOR ALLOY OR STAINLESS STEEL LINES WITHOUT RE-PAD PSS-RP01.
2. ALL MATERIAL IS CARBON STEEL CSA G40.21 GR.300W OR 350W.
3. STIFFENER PLATES ON FIRE PROOFED WIDE FLANGE BEAMS MUST PROJECT 10 mm OUTSIDE OF FIREPROOFING.
4. CONCRETE BEAMS MUST HAVE WEAR PLATES.

3	RE-ISSUED FOR CONSTRUCTION	11/11/1	JS	AVS	AB	JN
1	RE-ISSUED FOR CONSTRUCTION	08/01/28	TM	AVS	TA	KOR
0	ISSUED FOR CONSTRUCTION	05/11/07	TS	MJ		
REV	REVISION	DATE	DRN	CHK	ENG	APP

CLIENT	TITLE PIPE SUPPORT STANDARD NPS 3" TO NPS 10" DIRECTIONAL ANCHOR BARE LINES DA2					
PREPARED BY	SCALE N.T.S.	DWG. No. PSS-DA02	PROJ.	REV. 3		
		CLIENT DWG. No.				