

CODING EXAMPLE
 CL04-8"
 ↑ PIPE SIZE
 ↑ PSS STD

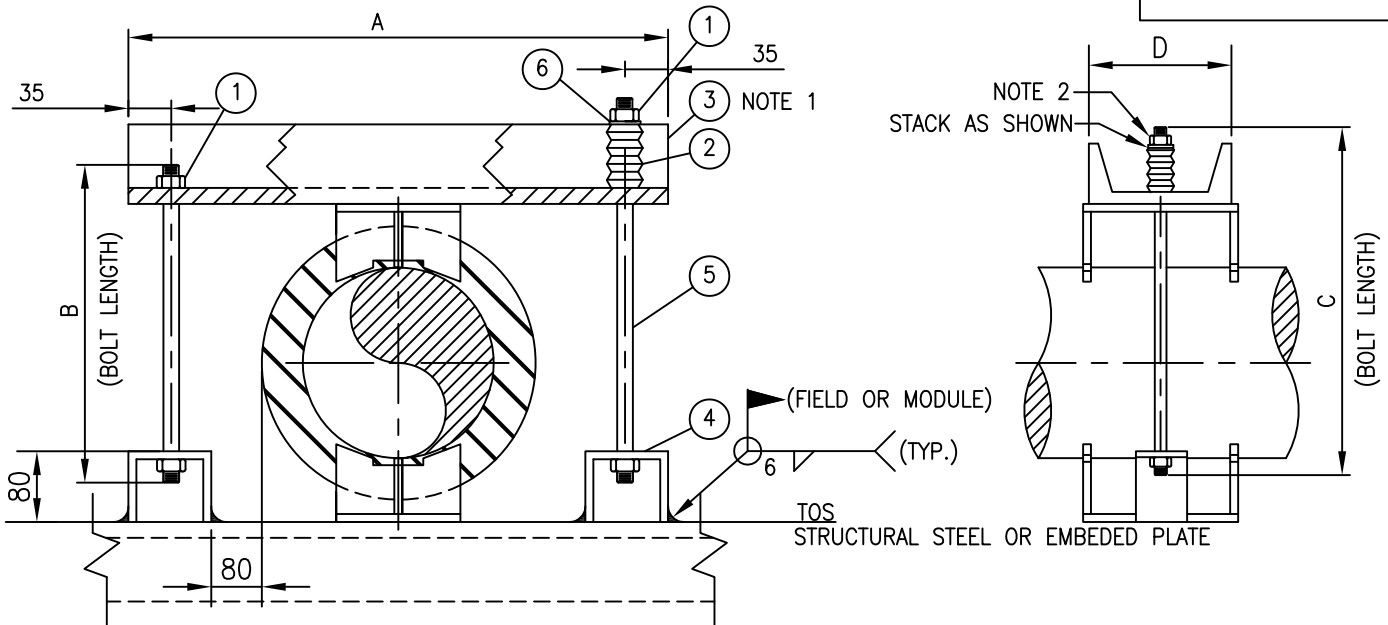


TABLE		
MARK NO.	"A"	QTY. REQ'D
①	3/4" CARBON STEEL, ANCO SELF-LOCKING NUT, ASTM A563 CLASS 2 FIT	4
②	3/4" BELLEVILLE WASHERS	3
③	CHANNEL 'A' x 'D' CARBON STEEL CSA G40.21 GR.300W	1
④	GRINNEL FIG. 66 - 3/4" WELDED BEAM ATTACHMENT OR APPROVED EQUAL	2
⑤	3/4" ALLOY STEEL STUB BOLT, ASTM A193, GR 8-7, CLASS 2 FIT (LENGTH PER TABLE)	2
⑥	13/16" I.D X 2" O.D. X WASHER	1

TABLE				
PIPE SIZE NPS	"A"	"B"	"C"	"D"
8"	630	415	440	C200x17
10"	685	470	495	C200x17
12"	740	520	545	C250x23
14"	770	550	575	C250x23
16"	820	600	625	C250x23

NOTES:

1. DRILL TWO (2) 7/8" HOLES IN ITEM ③ FOR BOLTS.
2. FIELD PROCEDURE FOR TIGHTENING NUTS:
 - A) TIGHTEN ALL NUTS BY HAND (FINGER TIGHT)
 - B) TURN NUT AT BELLEVILLE WASHER AN ADDITIONAL 90°

0	ISSUED FOR CONSTRUCTION								
REV	REVISION	DATE	DRN	CHK	ENG	APP			
CLIENT		TITLE PIPE SUPPORT STANDARD NPS 8" TO NPS 16" HOLD DOWN CLAMP FOR INSULATED LINES CLO4							
PREPARED BY		SCALE N.T.S.	DWG. No. PSS-CL04			PROJ.		REV. 0	