

CODING EXAMPLE
 C2-6"
 PIPE SIZE
 PSS STD

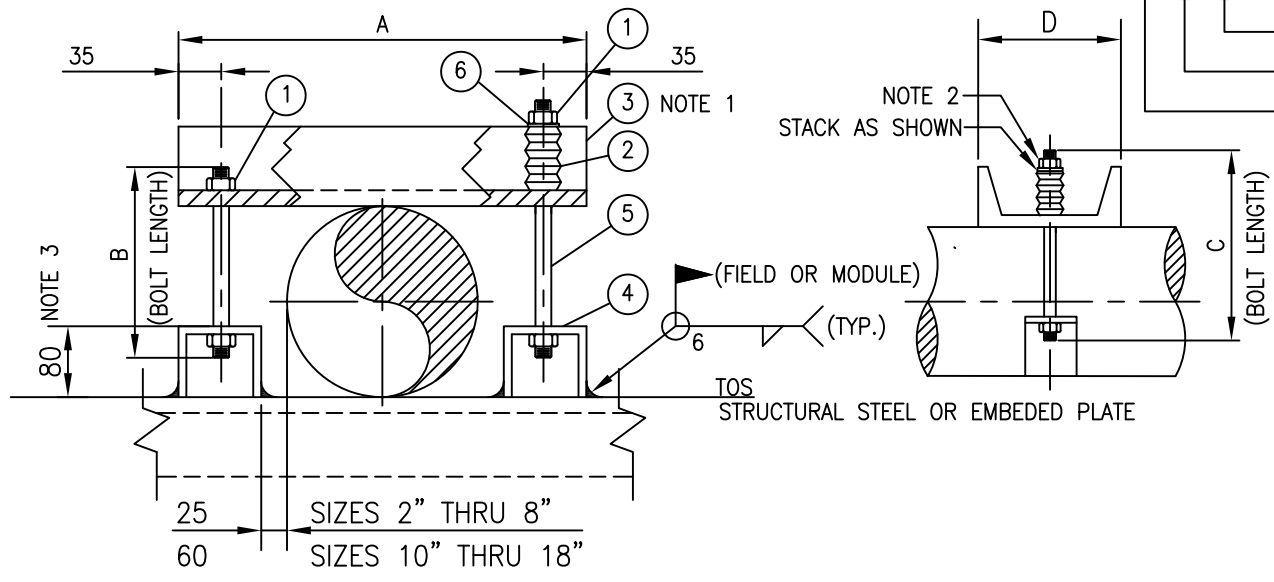


TABLE		
MARK NO.	"A"	QTY. REQ'D
①	3/4" CARBON STEEL, ANCO SELF-LOCKING NUT, ASTM A563 CLASS 2 FIT	4
②	3/4" BELLEVILLE WASHERS	3
③	CHANNEL 'A' x 'D' CARBON STEEL CSA G40.21 GR.300W	1
④	GRINNEL FIG. 66 - 3/4" WELDED BEAM ATTACHMENT OR APPROVED EQUAL	2
⑤	3/4" ALLOY STEEL STUB BOLT, ASTM A193, GR 8-7, CLASS 2 FIT (LENGTH PER TABLE)	2
⑥	13/16" I.D X 2" O.D. X WASHER	1

TABLE				
PIPE SIZE NPS	"A"	"B"	"C"	"D"
2"	240	70	95	C100x8
3"	270	100	125	C100x8
4"	295	110	135	C150x12
6"	350	165	190	C150x12
8"	400	215	240	C200x17
10"	520	270	295	C200x17
12"	570	320	345	C250x23
14"	600	350	375	C250x23
16"	650	400	425	C250x23
18"	700	450	475	C250x23

NOTES:

1. DRILL TWO (2) 7/8" HOLES IN ITEM ③ FOR BOLTS.
2. FIELD PROCEDURE FOR TIGHTENING NUTS:
 - A) TIGHTEN ALL NUTS BY HAND (FINGER TIGHT)
 - B) TURN NUT AT BELLEVILLE WASHER AN ADDITIONAL 90°
3. FIELD TRIM TO 40 HIGH FOR 2" & 3" PIPE HOLD DOWNS

0	ISSUED FOR CONSTRUCTION									
REV	REVISION					DATE	DRN	CHK	ENG	APP
CLIENT			TITLE PIPE SUPPORT STANDARD HOLD DOWN CLAMP NPS 2" TO NPS 18" C2							
PREPARED BY			SCALE N.T.S.	DWG. No. PSS-CL02			PROJ.		REV. 0	