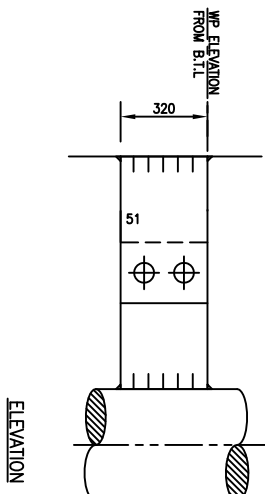
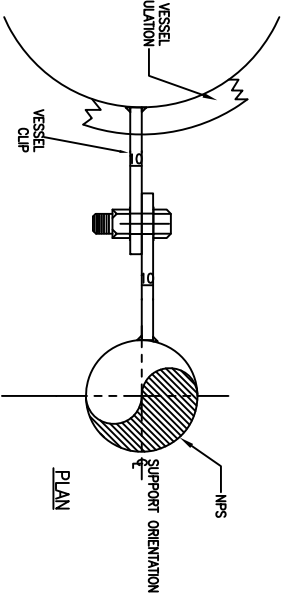


VESSEL SUPPORT DETAILS

NOTES

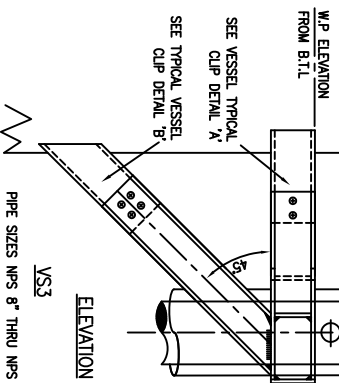
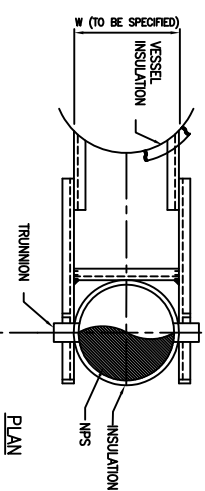
SEE DWG. No. PSS-VS01

SEE DWG. No. PSS-VS03



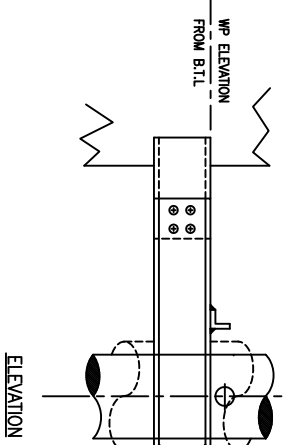
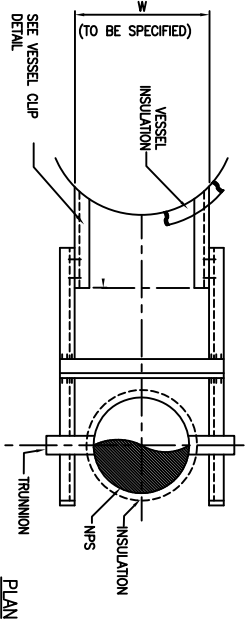
VS1
PIPE SIZES NPS 1 1/2" THRU NPS 4"

SEE DWG. No. PSS-VS02

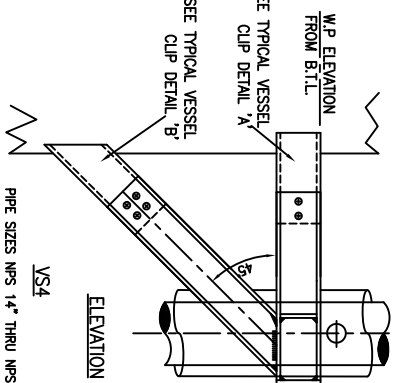
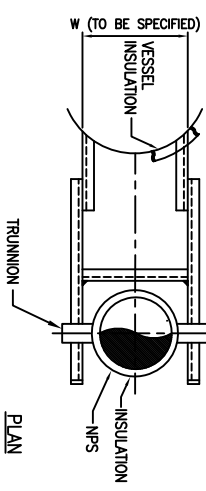


VS3
PIPE SIZES NPS 8" THRU NPS 12"

SEE DWG. No. PSS-VS04



VS2
PIPE SIZES NPS 2" THRU NPS 6"



VS4
PIPE SIZES NPS 14" THRU NPS 24"

1. THIS DRAWING SHALL BE USED FOR SELECTION AND APPLICATION ONLY. DETAILS ARE SHOWN ON FABRICATION DRAWING.
2. DEVIATIONS FROM THIS DRAWING SHALL BE REVIEWED BY STRESS ENGINEER AND DETAILED ON PIPING ISOMETRIC.
3. LOCATION OF PIPE GUIDES TO BE DETERMINED BY STRESS ENGINEER.
4. 1" DIMENSIONS OF 300 MIN. ARE PREFERABLE & 700 MAX. IF EXCEEDED, SPECIALLY DESIGNED SUPPORTS ARE REQUIRED.
5. VESSEL FABRICATOR TO FURNISH ALL NECESSARY BARS & PLATES WELDED TO VESSEL, UNLESS NOTED OTHERWISE.
6. VESSEL FABRICATOR TO INSTALL PLATE & INVESTIGATE THIN WALLED VESSELS FOR EXCESSIVE LOCAL STRESSES DUE TO SUPPORT LOADINGS & ADD REPAIR IF REQUIRED.

TITLE
SELECTION & APPLICATION GUIDES
FOR VESSEL SUPPORTS
SAG9

DRAWN BY:	DATE
DESIGNED BY:	DATE
CHECKED BY:	DATE
APPROVED BY:	DATE

BY	DATE	CHK	APP.	CLIENT	CLIENT BY:	DATE
----	------	-----	------	--------	------------	------

DESCRIPTION	REV.
-------------	------

DRAWING NO.	REFERENCE DRAWINGS
-------------	--------------------