

SEE DWG. No. PSS-DA01

SEE DWG. No. PSS-DA04

FIREPROOF ANCHOR STUB

NOTES

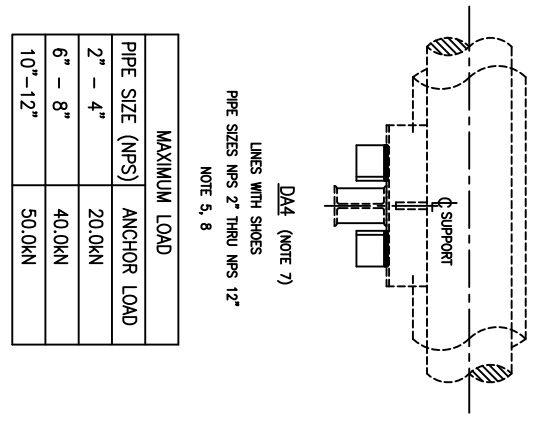
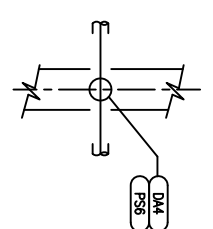
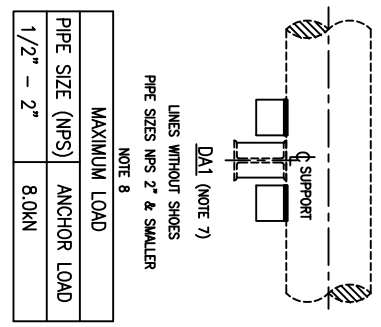
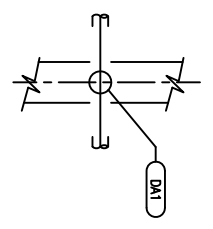
1. THIS DRAWING SHALL BE USED FOR SELECTION AND APPLICATION ONLY. DETAILS ARE SHOWN ON FABRICATION DRAWINGS.
2. DEVIATIONS FROM THIS DRAWING SHALL BE REVIEWED BY STRESS ENGINEERING AND DETAILED ON PIPING ISOMETRIC
3. THIS DRAWING IS NOT APPLICABLE FOR LINES IN VACUUM SERVICE AND ACOUSTICALLY INSULATED PIPING
4. LOCATION OF ANCHORS TO BE DETERMINED BY STRESS ENGINEER
5. ALL ANCHOR POINTS REQUIRE LONG (L) SHOES
6. STIFFENER PLATES:
7. FIREPROOFING:
  - 7.1. DIRECTIONAL ANCHORS SHALL BE ADJUSTED TO SUIT PSS-FPS1
  - 7.2. FPS1 SHALL BE ADDED TO TAG No. (i.e. DA1/FP1)
8. MAXIMUM ANCHOR LOADS:
 

THE MAXIMUM LOADS ON THE ANCHORS AND DIRECTIONAL STOPS ARE LIMITED BY THE PIPE WALL THICKNESS.

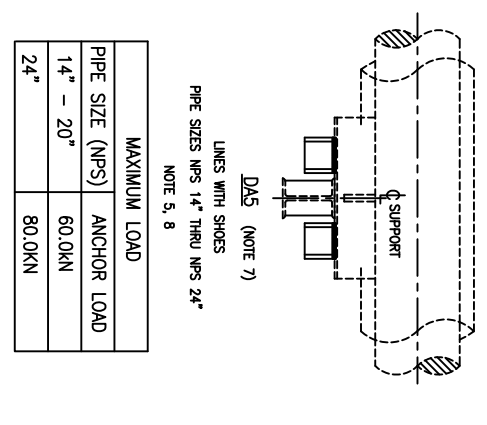
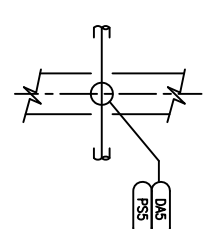
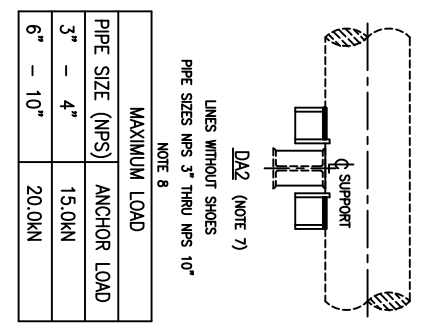
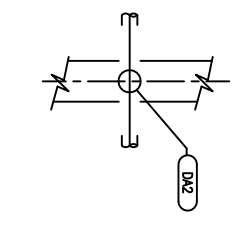
MAXIMUM LOADS INDICATED IN THESE CHARTS ARE FOR WALL THICKNESS'S FROM STD. W.T. TO XS. WITHOUT THE USE OF RE-PADS ALL ANCHOR LOADS MUST BE CHECKED BY THE STRESS ENGINEER

MAXIMUM LOADS FOR WALL THICKNESS'S LESSER OR GREATER THAN THESE AND THE POSSIBLE USE OF RE-PADS (RP1) WILL BE DETERMINED BY THE STRESS ENGINEER.

THE STRUCTURAL COMPONENTS ARE CAPABLE OF WITHSTANDING CONSIDERABLY GREATER LOADS THAN THOSE INDICATED.

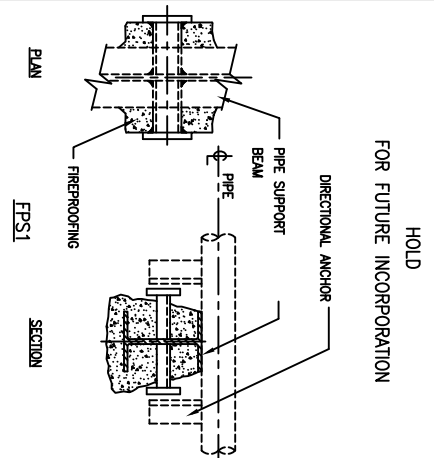
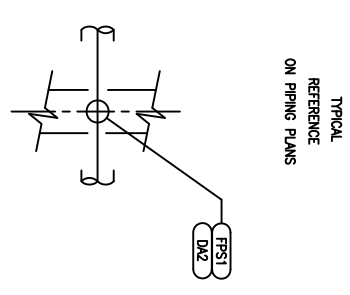
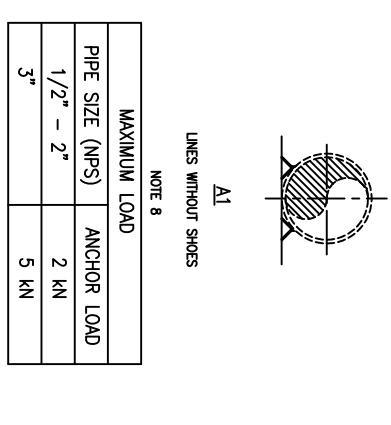
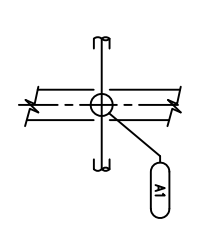
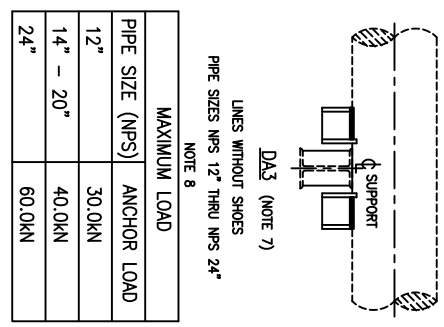
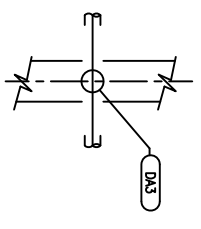


SEE DWG. No. PSS-DA05



SEE DWG. No. PSS-DA03

SEE DWG. No. PSS-A001



SELECTION & APPLICATION GUIDE FOR ANCHORS

DATE	DATE	DATE	DATE	DATE	DATE
DRAWN BY:	DESIGNED BY:	CHECKED BY:	APPROVED BY:	CLIENT BY:	

DRAWING NO.	REFERENCE DRAWINGS	IMV Projects Inc.	REV.	DESCRIPTION	BY	DATE	CHK	APP.	CLIENT	SCALE	JOB NO.	DRAWING NO.	REV.
-------------	--------------------	-------------------	------	-------------	----	------	-----	------	--------	-------	---------	-------------	------