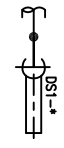


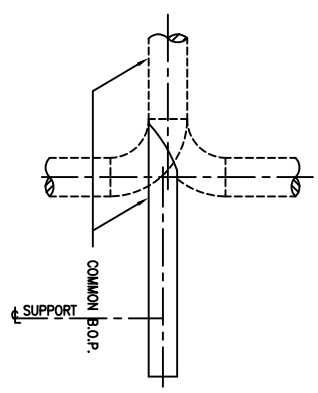
DUMMY SUPPORTS

SEE DWG. No. PSS-DS01

TYPICAL REF. ON PIPING PLAN



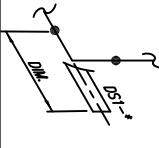
ALTERNATIVE



PIPE SIZE NPS 2" THRU NPS 24"  
\* DUMMY PIPE SIZE

NOTES:

1. SEE TRUNNION NOTES



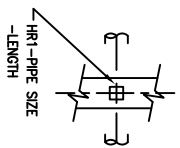
TYPICAL REF. ON PIPING ISOMETRIC

SEE DWG. No. PSS-DS02

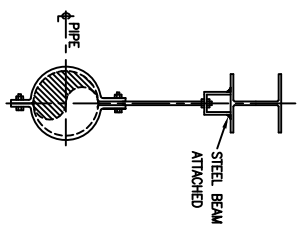
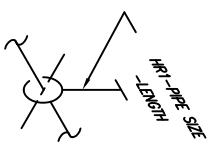
HANGER RODS

SEE DWG. No. PSS-HR01

TYPICAL REF. ON PIPING PLAN



TYPICAL REF. ON PIPING ISOMETRIC (NOTE 5)



PIPE SIZE NPS 1" THRU NPS 24"  
(FOR UNINSULATED LINES)

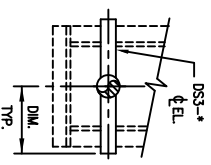
NOTES

1. MAXIMUM ALLOWABLE TEMPERATURE 200°C (392°F)
2. WHERE PIPE MATERIAL IS OTHER THAN CARBON STEEL, PIPE IS TO BE WRAPPED WITH TEFLON TAPE BEFORE INSTALLATION OF PIPE CLAMP.

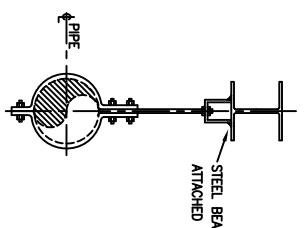
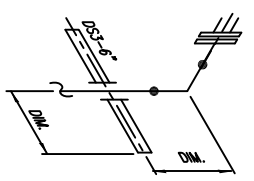
TRUNNION SUPPORT

SEE DWG. No. PSS-DS03

TYPICAL REF. ON PIPING PLAN



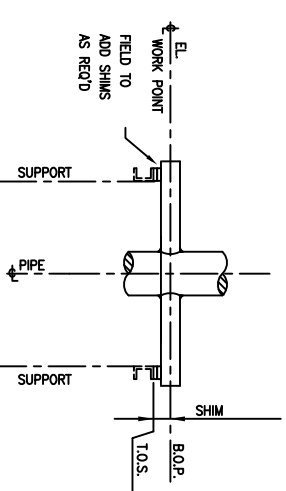
TYPICAL REF. ON PIPING ISOMETRIC (NOTE 5)



PIPE SIZE NPS 1" THRU NPS 24"  
(FOR INSULATED LINES)

NOTES

1. MAXIMUM ALLOWABLE TEMPERATURE 200°C (392°F)
2. WHERE PIPE MATERIAL IS OTHER THAN CARBON STEEL, PIPE IS TO BE WRAPPED WITH TEFLON TAPE BEFORE INSTALLATION OF PIPE CLAMP.



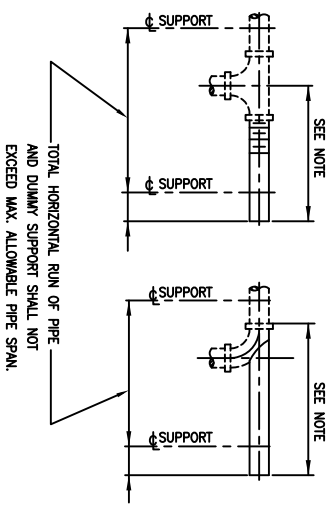
PIPE SIZE NPS 2" THRU NPS 24"  
\* TRUNNION SIZE

NOTES:

1. DUMMY SUPPORT MATERIAL TO MATCH PIPING
2. DUMMY SCHEDULE TO BE A MINIMUM OF XS ON LINES XS AND BELOW
3. DUMMY SUPPORT LENGTH TO BE INDICATED ON ISOMETRIC
4. DUMMY MATERIAL WILL BE SHOWN AS PIPE IN THE ISOMETRIC B.O.M.SUPPORT CODE WILL IDENTIFY THE TRUNNION SUPPORT ON THE FACE OF THE ISOMETRIC
5. WELD SIZE SHALL BE SAME AS DUMMY LEG WALL THICKNESS
6. DIMENSION W ALLOWS CLEARANCE FOR SOAM INSULATION COPE INSULATION FOR HIGHER THK'S ANY INCREASE IN W OR ADDITIONAL STRESS REQUIREMENTS MUST INVOLVE THE USE OF RE-FRACS PSS-RF2
7. UNLESS NOTED OTHERWISE ON APPROVED STRESS SKETCH USE LINE SPEC MATERIAL & WALL THICKNESS FOR THE DUMMY
8. WHERE SPECIFIED ON APPROVED STRESS SKETCH THE DUMMIES WILL USE THE WALL THICKNESS SPECIFIED THE SPECIFIED W.T. DUMMY MATERIAL WILL BE SELECTED FROM DUMMY SPEC TO MATCH THE LINE SPEC MATERIAL TYPE

NOTE:  
PRIORITY SHOULD BE GIVEN TO EXTENDING THE PIPE AS A HEADER TO NEAREST SUPPORT. USE DS2 ONLY WHERE DEAD LEGS ARE UNACCEPTABLE

PIPE SIZE NPS 1 1/2" AND SMALLER (SCREENED OR SOCKET WELD)  
\* DUMMY SIZE TO MATCH PIPE SIZE.



TOTAL HORIZONTAL RUN OF PIPE AND DUMMY SUPPORT SHALL NOT EXCEED MAX. ALLOWABLE PIPE SPAN.

DRAWING NO.	REFERENCE DRAWINGS	REV.	DESCRIPTION	BY	DATE	CHK	APP.	CLIENT	CLIENT BY:	DATE	DATE	DATE	DATE	DATE	DATE

DRAWN BY: _____ DATE _____															
DESIGNED BY: _____ DATE _____															
CHECKED BY: _____ DATE _____															
APPROVED BY: _____ DATE _____															
TITLE SELECTION & APPLICATION GUIDE FOR DUMMY SUPPORTS, TRUNNIONS & HANGER RODS SAG3															
SCALE N.T.S.				JOB NO.				DRAWING NO.				REV.			

NOTES

1. THIS DRAWING SHALL BE USED FOR SELECTION AND APPLICATION ONLY. DETAILS ARE SHOWN ON FABRICATION DRAWINGS
2. THE FOLLOWING CONDITIONS REQUIRE STRESS REVIEW OF TRUNNIONS AND DUMMY SUPPORTS.
  - 2.1 CONCENTRATED LOADS SUCH AS VALVES.
  - 2.2 ALLOY PIPE.
  - 2.3 DESIGN TEMPERATURES EXCEEDING 400°C.
  - 2.4 LINE SIZES GREATER THAN NPS 24".
3. DUMMY SUPPORTS AND TRUNNIONS THAT DIFFER FROM THIS STANDARD SHALL BE REVIEWED BY STRESS ENGINEERING AND DETAILED ON PIPING ISOMETRIC.
4. DUMMY SUPPORTS:
  - 4.1 WHEN THE CONDITIONS LISTED BELOW EXIST, CONSULT STRESS ENGINEER PRIOR TO SELECTION OF ELBOW ATTACHMENTS.
  - 4.2. DESIGN TEMP. OF LINES BELOW -48°C
  - 4.3. OPERATION PRESS. 20,000 KPa & ABOVE.
  - 4.4. TO & FROM RECIPROCATING COMPRESSORS & PUMPS.
  - 4.5. CHROME ALLOYS OF 2 Cr. THRU 17 Cr.
  - 4.6. COLUMBIUM STABILIZED STAINLESS STEEL (TYPE 347) THICKER THAN STD WT. OF WALL EXCEEDING 6mm.
  - 4.7. LINES IN HYDROGEN (100 psia PARTIAL PRESSURE & ABOVE), & OXYGEN SERVICE.