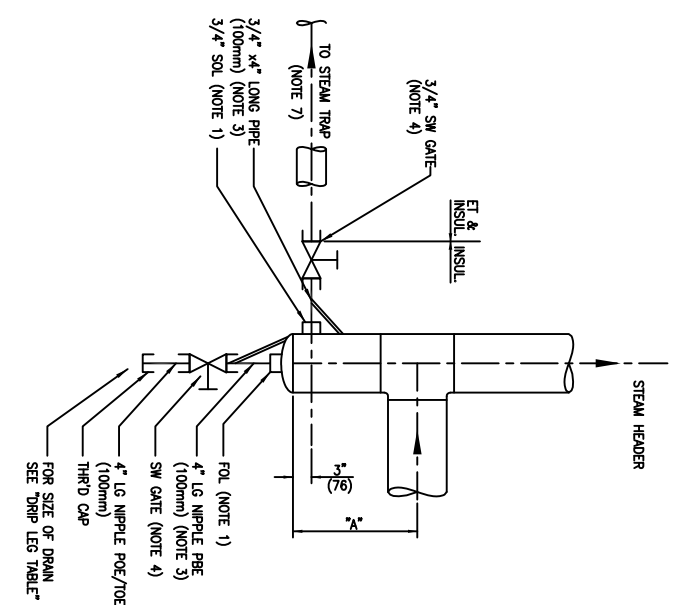
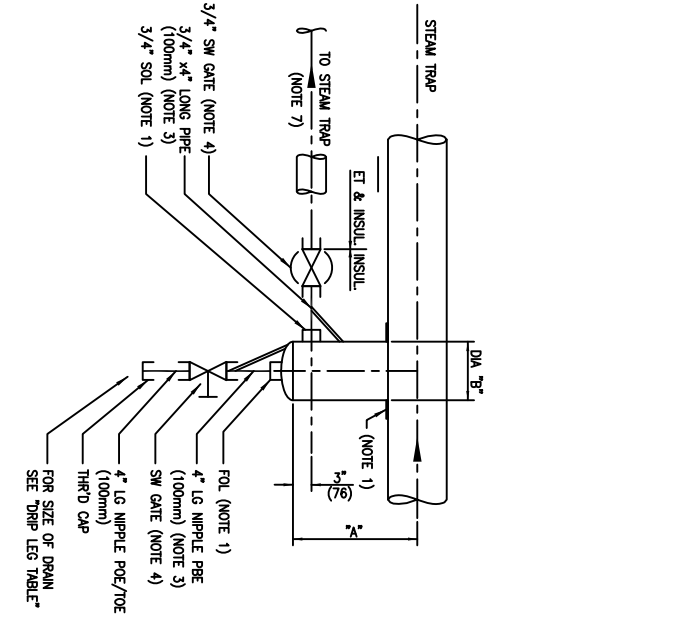


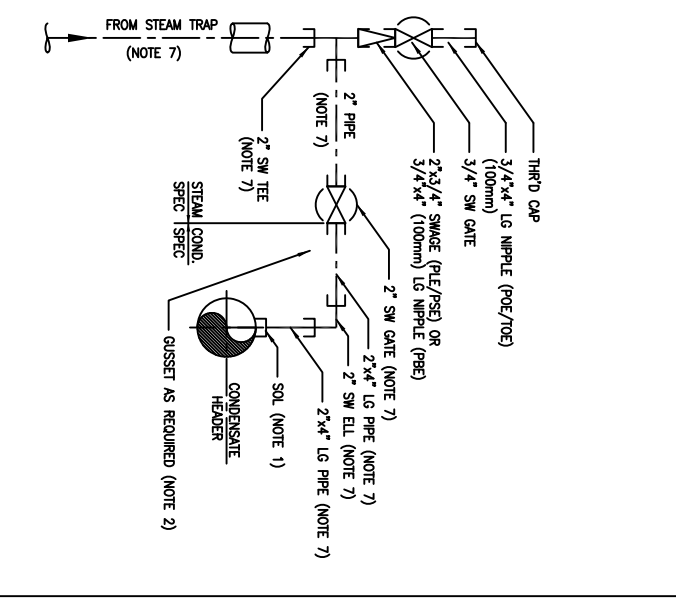
DETAIL ①
DRIP LEG AT CONTROL VALVE



DETAIL ②
DRIP LEG AT LOW POINT



DETAIL ③
DRIP LEG AT HORIZONTAL RUN

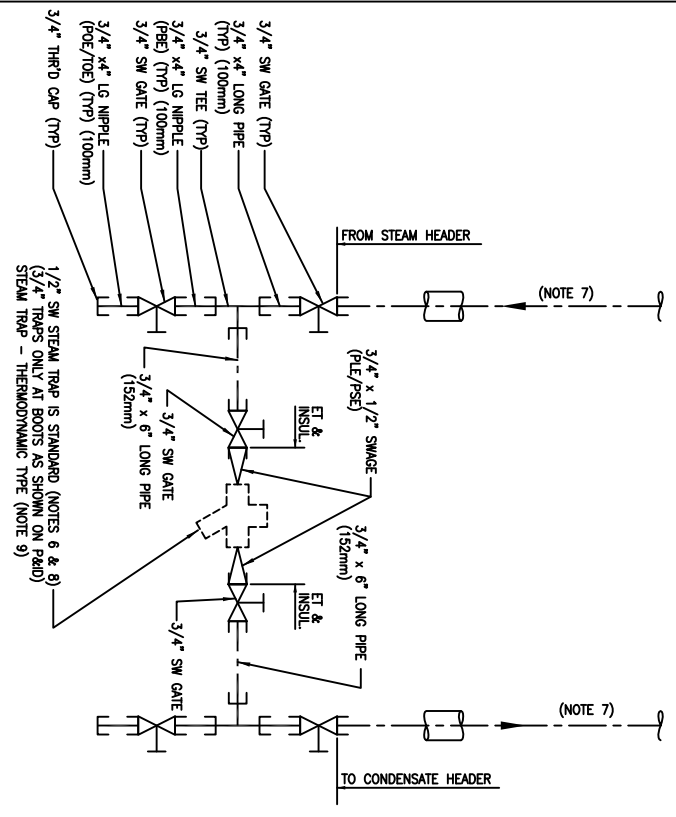


DETAIL ④
CONDENSATE HEADER

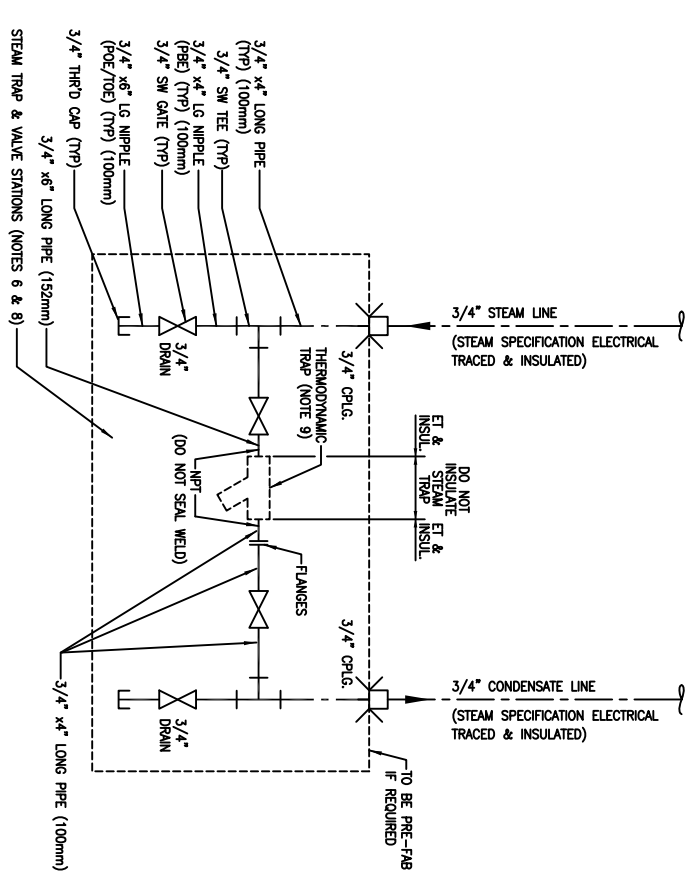
- NOTES**
1. ALL BRANCH CONNECTIONS TO BE AS PER PIPING LINE CLASSES.
 2. ALL BRANCH CONNECTIONS 1 1/2" NPS AND SMALLER SHALL BE BRACED AS PER DMS. NO. PSD-0012.
 3. WHEN PIPE INSUL IS 3" AND ABOVE USE 6" (150mm) LONG PIPE OR 6" (150mm) LONG NIPPLES.
 4. DOUBLE BLOCK AND BLEED TO BE USED AS SPECIFIED
 5. PIPING MATERIALS PER PIPING LINE CLASSES.
 6. STEAM TRAP TO BE LEFT BARE (NO INSUL & ET).
 7. USE 2" PIPE SIZE AT PAPERBACKS.
 8. INSULATION AND ET LIMITS TO BE INDICATED ON DRAWINGS
 9. FOR STEAM TRAP SELECTION, REFER TO PIPING LINE CLASSES.
 10. OWNER ENGINEERS APPROVAL REQUIRED FOR OTHER STEAM TRAP TYPES.

DRIP LEG TABLE

SIZE OF HEADER (MAIN)	DNM "x"	DNM "B"	SIZE OF DRAIN
3"	12" (305mm)	8"	3/4"
4"	13" (330mm)	4"	3/4"
6"	14" (355mm)	4"	3/4"
8"	15" (381mm)	4"	3/4"
10"	16" (406mm)	6"	3/4"
12"	17" (430mm)	8"	1"
14"	17" (430mm)	8"	1"
16"	19" (482mm)	8"	1"
18"	20" (508mm)	10"	1 1/2"
20"	24" (609mm)	10"	1 1/2"
24"	24" (609mm)	12"	1 1/2"



DETAIL ⑤
STEAM TRAP ASSEMBLY 600# & 790#



DETAIL ⑥
STEAM TRAP ASSEMBLY BELOW 150#, 150# & 425#

REV.	DESCRIPTION	DATE	BY	CHK	APP.	CLIENT	CLIENT BY:	DATE	SCALE	JOB NO.	DRAWING NO.	REV.
0	ISSUED FOR CONSTRUCTION								N.T.S.		PSD-0027	0

DATE	DESIGNED BY:	CHECKED BY:	APPROVED BY:

DATE	DRAWN BY:	TITLE
		PIPING STANDARD DETAILS DRIP LEGS AND STEAM TRAP ASSEMBLIES

DRAWING NO. REFERENCE DRAWINGS

IMV Projects Inc.