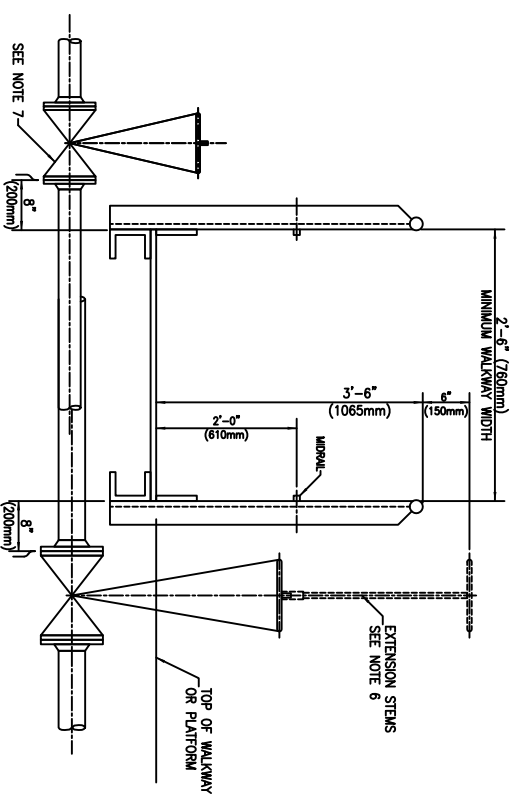
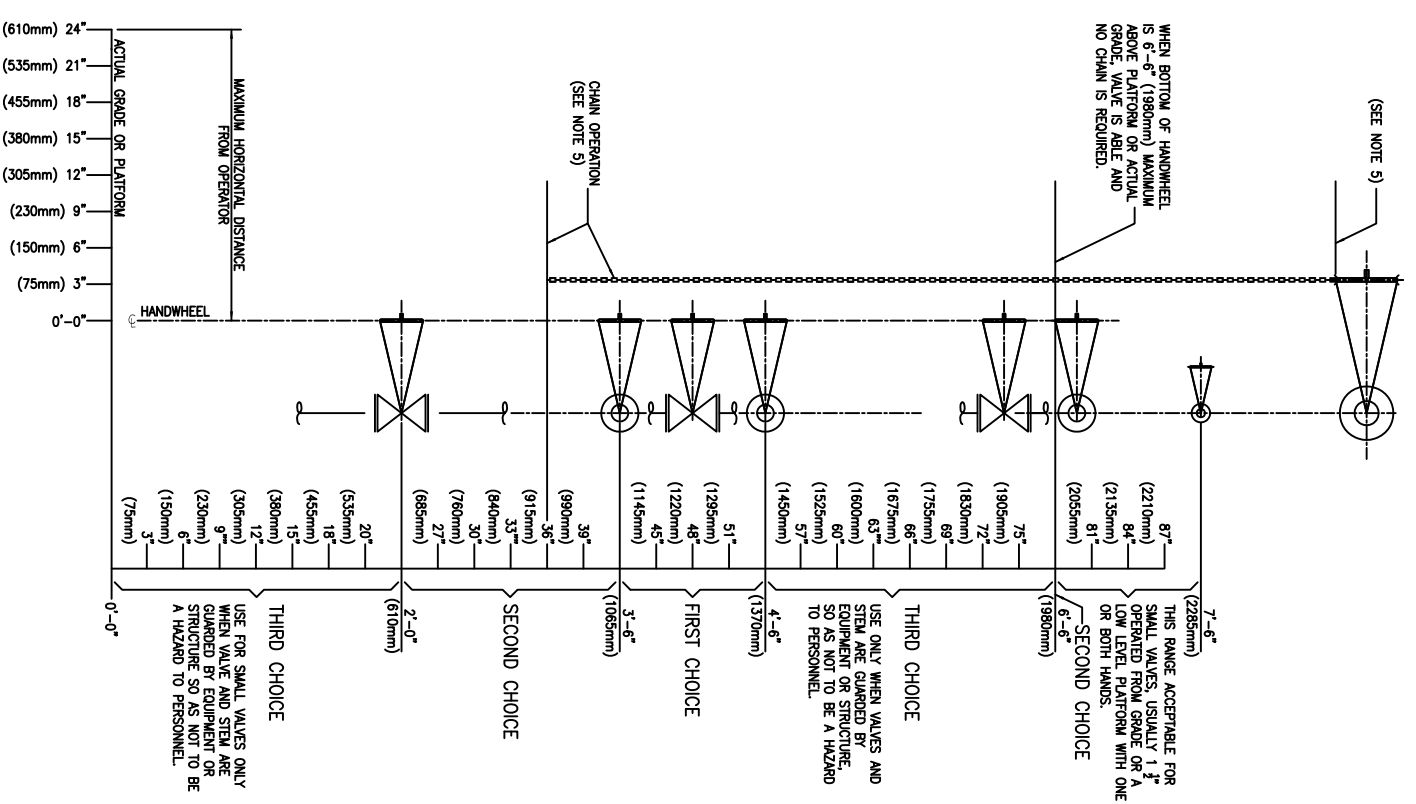
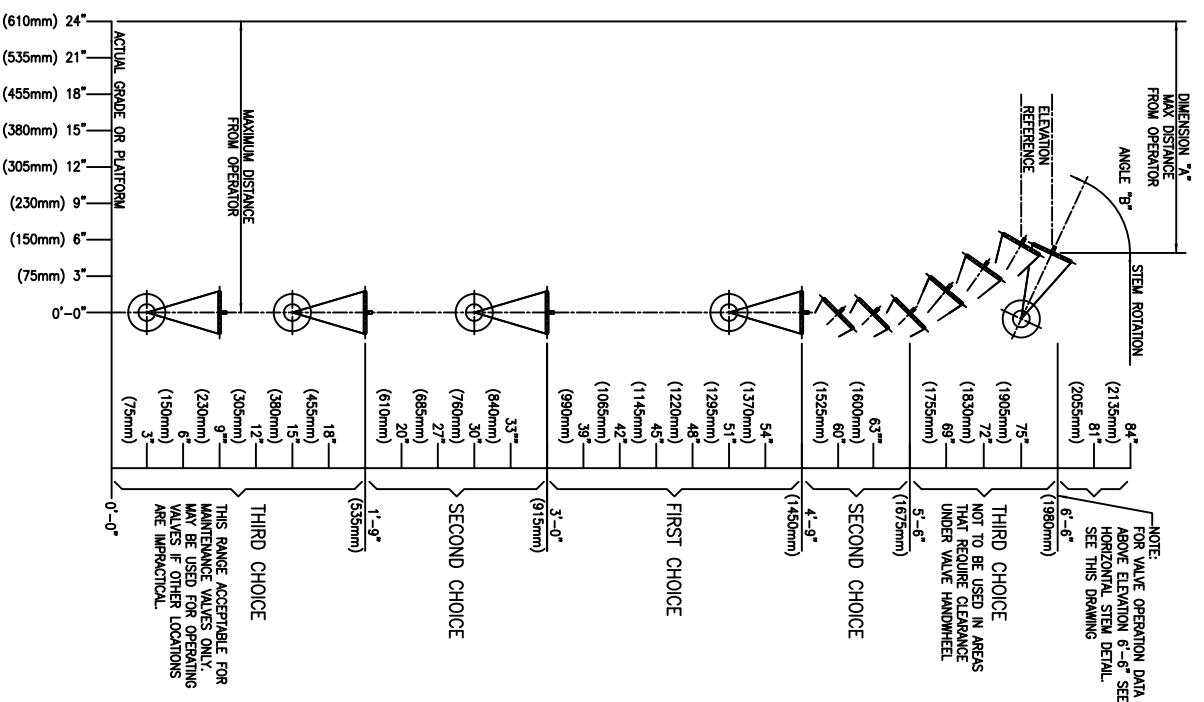


TILTED STEM		
ELEVATION	DIMENSION A	ANGLE B
5'-0" (1524mm)	2'-0" (610mm)	45°
5'-3" (1600mm)	2'-0" (610mm)	45°
5'-6" (1676mm)	2'-0" (610mm)	45°
5'-9" (1752mm)	1'-9" (564mm)	50°
6'-0" (1828mm)	1'-6" (457mm)	60°
6'-3" (1905mm)	1'-0" (305mm)	65°
6'-6" (1981mm)	1'-0" (305mm)	75°



- NOTES
1. ALL VALVES REQUIRING ATTENTION DURING PLANT OPERATION SHALL BE OPERABLE FROM GRADE, PLATFORMS OR WALKWAYS.
 2. VALVES IN CAUSTIC AND ACID SERVICES SHALL BE LOCATED BELOW EYE LEVEL OR IN SUCH A MANNER AS NOT TO PRESENT A HAZARD.
 3. VALVES MAY BE ROTATED TO A HORIZONTAL POSITION WITH NO GREAT DECREASE IN MAINTENANCE CONVENIENCE, BUT SHOULD NOT BE INSTALLED WITH THE STEM DOWNWARD, SINCE THE BONNET ACTS AS A TRAP FOR ABRASIVE SEDIMENT AND WATER WHICH MAY FREEZE UNDER ADVERSE CLIMATIC CONDITIONS.
 4. USE ACTUAL GRADE IN ESTABLISHING HEIGHTS OF VALVES. NOT HIGH POINT OF FINISHED GRADE OR NORMAL GRADE.
 5. WHEN BOTTOM OF VALVE HANDWHEEL ELEVATION IS GREATER THAN 6'-6" ABOVE GRADE OR PLATFORM, CHAIN OPERATION MAY BE USED. CHAIN MUST NOT HANG IN THE WALKWAY OR ACCESS AREA AND SHALL TERMINATE APPROXIMATELY 3'-0" ABOVE GRADE OR PLATFORM. CHAIN OPERATION SHALL NOT BE USED ON VALVES 1 1/2" AND SMALLER. CHAIN OPERATORS TO HAVE SAFETY CABLE RETAINERS.
 6. EXTENSION STEMS MAY BE USED TO FACILITATE VALVE OPERATION WITH PRIOR APPROVAL OF THE OWNERS ENGINEER.
 7. VALVES IN ADJACENT LINES MUST BE STAGGERED ON EACH SIDE OF WALKWAY.
 8. SAFETY REQUIRES THAT VALVES PLACED IN A HIGH POSITION (10'-0" OR MORE) BE PLACED OVER A PLATFORM RATHER THAN ADJACENT TO THEM.
 9. WHEREVER POSSIBLE, HANDWHEEL & STEM SHALL NOT ENOUGH INTO OPERATION ACCESS.

DRAWING NO.	REFERENCE DRAWINGS	REV.	DESCRIPTION	BY	DATE	CHK.	APP.	CLIENT	CLIENT BY:	DATE	SCALE	JOB NO.	DRAWING NO.	REV.
		0	ISSUED FOR CONSTRUCTION										PSD0026	0

SCALE APPLIES IF PLOTTED ON SIZE "D" (22"x34")