

LINE SIZE DIMENSION	2" x 3"	3" x 4"	4" x 6"	6" x 8"	8" x 10"	10" x 12"
A	10" (255mm)	11" (280mm)	12 1/2" (320mm)	14" (355mm)	15 1/2" (395mm)	17" (430mm)
B	4" (100mm)	4" (100mm)	4 1/2" (115mm)	4 1/2" (115mm)	5" (125mm)	5" (125mm)

NOTES
1. FOR GENERAL NOTES SEE PSD-0029-1

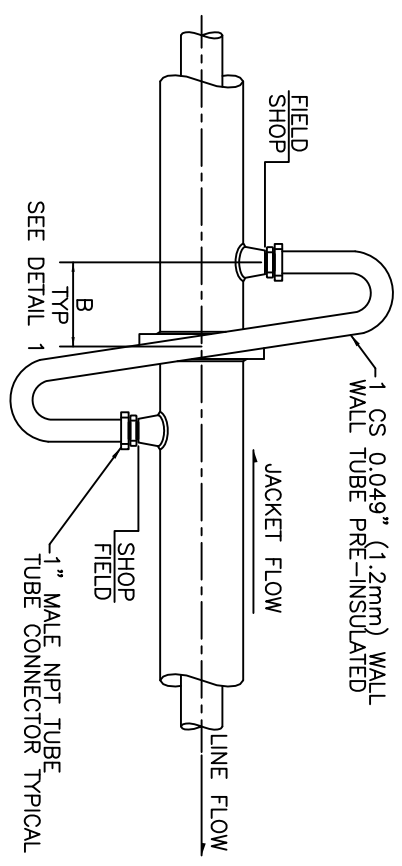
TABULATION OF MATERIAL

LINE SIZE ITEM	2" x 3"	3" x 4"	4" x 6"	6" x 8"	8" x 10"	10" x 12"
1	2" Ø PIPE	3" Ø PIPE	4" Ø PIPE	6" Ø PIPE	8" Ø PIPE	10" Ø PIPE
2	3" Ø PIPE	4" Ø PIPE	6" Ø PIPE	8" Ø PIPE	10" Ø PIPE	12" Ø PIPE
3	3"x2" RFSO REDUCING FLANGE	4"x3" RFSO REDUCING FLANGE	6"x4" RFSO REDUCING FLANGE	8"x6" RFSO REDUCING FLANGE	10"x8" RFSO REDUCING FLANGE	12"x10" RFSO REDUCING FLANGE
4 * NOTE 2	3-1/4" (6mm) DIA ROD @ 120°	3-1/4" (6mm) DIA ROD @ 120°	3-3/4" (19mm) DIA ROD @ 120°	4-5/8" (16mm) DIA ROD @ 90°	4-5/8" (16mm) DIA ROD @ 90°	4-5/8" (16mm) DIA ROD @ 90°
5	1" TOL FOR JUMPOVERS / 1" 3000# SOCKETLET FOR STEAM FEED & CONDENSATE RETURN					
6	SPLIT 3" BW TEE	SPLIT 4" BW TEE	SPLIT 6" BW TEE	SPLIT 8" BW TEE	SPLIT 10" BW TEE	SPLIT 12" BW TEE
7	STUB-IN FABRICATE FROM PIPE	3" BW TEE	4" BW TEE	6" BW TEE	8" BW TEE	10" BW TEE
8	SPLIT RED STUB-IN (SEE DETAIL #2 SAG23-2 FOR FABRICATION DETAILS)					
9	SPLIT CROSS (SEE BRANCH TABLE BELOW & DETAIL #1 SAG23-2 FOR FABRICATION DETAILS)					
10	3" 90° LR ELBOW	4" 90° LR ELBOW	4" 90° LR ELBOW	6" 90° LR ELBOW	8" 45° LR ELBOW	-
11	2" 90° LR ELBOW	3" 90° LR ELBOW	6" 90° LR ELBOW	8" 90° LR ELBOW	SPLIT 10" 90° LR ELBOW	-
12	B.W. CROSS (SEE BRANCH TABLE BELOW)					

BRANCH CONNECTION TABLE

HEADER N.P.S.		BRANCH CONNECTION TABLE					
3" x 2"	F.F./E.F.	3" x 2"	4" x 3"	6" x 4"	8" x 6"	10" x 8"	12" x 10"
4" x 3"	R.F.	E.F.	E.F.	E.F.	E.F.	E.F.	E.F.
6" x 4"	R.F.	E.F.	E.F.	E.F.	E.F.	E.F.	E.F.
8" x 6"	R.S.I.	R.F.	R.F.	R.F.	R.F.	R.F.	R.F.
10" x 8"	R.S.I.	R.F./R.S.I.* NOTE 1	R.F.	R.F.	R.F.	R.F.	R.F.
12" x 10"	R.S.I.	R.S.I.	R.F.	R.F.	R.F.	R.F.	E.F.

DETAIL #6 TUBE JUMP OVER



E.F. = EQUAL B.W. FITTING. SHEET 1 FIGS. 2 & 3
 R.F. = REDUCING B.W. FITTINGS. SHEET 1 FIGS. 2 & 3
 F.F. = FABRICATED FITTINGS. SHEET 2 DETAILS 1 CROSSES ONLY
 R.S.I. = REDUCING STUB IN. SHEET 1 FIG. 4
 NOTE 1:
 SHEET 2 FIG. 3
 EXTERNAL PIPE B.W. STUB IN.
 INTERNAL PIPE RED STUB IN.
 NOTE 2:
 SHOP SUPPLY

DRAWING NO.	REFERENCE DRAWINGS	REV.	DESCRIPTION	BY	DATE	CHK	APP.	CLIENT	CLIENT BY:	DATE	TITLE	SCALE	JOB NO.	DRAWING NO.	REV.
		0	ISSUED FOR CONSTRUCTION								PIPING STANDARD DETAILS JACKETED PIPING DETAILS SHT 3 OF 3	N.T.S.		PSD-0024-3	0